

TEMPERATURE AND MALTREATMENT OF YOUNG CHILDREN*

Mary F. Evans

Ludovica Gazze

Jessamyn Schaller

University of Texas
at Austin

University of Warwick

Claremont McKenna
College

Abstract

We estimate the impacts of temperature on alleged and substantiated child maltreatment among young children using administrative data from state child protective service agencies. Leveraging short-term weather variation, we find increases in maltreatment of young children during hot periods. We rule out that our results are solely due to changes in reporting. Additional analysis identifies neglect as the temperature-sensitive maltreatment type, and we do not find evidence that adaptation or habituation mitigate this relationship. Given that climate change will increase exposure to extreme temperatures, understanding the temperature-child maltreatment relationship speaks to additional costs of climate change among the most vulnerable.

Keywords: Climate Change; Temperature; Child Maltreatment; Time Use

JEL CODES: Q54; I31; J12; J13.

*First version: January 2023. This Version: April 2023. Affiliations: Gazze—Department of Economics, University of Warwick, UK; Evans—Lyndon B. Johnson School of Public Affairs, University of Texas at Austin, USA; Schaller—Robert Day School of Economics and Finance, Claremont McKenna College, USA. We thank Ariel Ortiz-Bobea and Casey Wichman for helpful suggestions, as well as participants at seminars at the University of Warwick; University of Texas, Austin; Loughborough University; Texas A&M University. All errors and omissions remain our own.

1 Introduction

In the US child maltreatment is common and costly; almost 40% of children experience maltreatment by adulthood (Benson et al., 2022). Child maltreatment is most prevalent among young children. In 2019, about 40% of victims of child maltreatment were between the ages of zero and four (U.S. Department of Health and Human Services, Administration for Children and Families, Children’s Bureau, 2021). Victims of child maltreatment have lower levels of educational achievement, lower rates of employment, lower earnings, fewer assets, an increased risk of substance abuse, and are more likely to engage in crime and be incarcerated later in life (Currie and Tekin, 2012; Currie and Spatz Widom, 2010; Cicchetti and Handley, 2019; Eckenrode et al., 1993; Lansford et al., 2002; Mersky and Topitzes, 2010; Widom, 1989; Zielinski, 2009). Fang et al. (2012) estimate an average lifetime cost per victim of nonfatal child maltreatment of over \$200,000 (2010 USD).¹

Assessing risk factors for child maltreatment to inform prevention efforts is a national research priority (Office of the US Surgeon General, 2005). A large literature in public health and sociology identifies a range of factors correlated with child maltreatment including poverty, parental mental health, and parental substance abuse, among others. Recent contributions to this literature speak to the potential impacts of climate change on child maltreatment by exploring links between natural disasters and child maltreatment, and exposure to extreme temperatures and child maltreatment. Curtis et al. (2000) and Keenan et al. (2004) find increased reports of child abuse and incidence of inflicted traumatic brain injury, respectively, following natural disasters. Gruenberg et al. (2019) conduct a retrospective chart review of pediatric emergency department admissions and document a correlation between heat and admissions related to child abuse. Using similar research methods, Mehta et al. (2022) find no evidence of disproportionate increases in abusive head trauma with higher temperatures.

Motivated by findings in physiology and psychology, a growing literature in economics identifies several channels through which extreme temperatures might affect actual and/or observed child maltreatment. First, extreme temperatures may make adults more aggressive or children more restless largely through physiological channels (Hsiang et al., 2013; Ranson, 2014; Heilmann et al., 2021; Baylis, 2020; McCormack, 2023). Second, extreme temperatures may affect time use for children and adults. Changes in time use may result in adults and children spending more together in confined spaces, perhaps leading to increased parental stress; or may change the likelihood of maltreatment being witnessed and reported. Third,

¹The estimate reflects healthcare costs, productivity losses, child welfare costs, criminal justice costs, and special educational costs.

heat reduces cognitive function and adversely impacts mental health (Taylor et al., 2016; Graff Zivin et al., 2018; Park, 2022; Park et al., 2020; Mullins and White, 2019), which may alter parental decision making. Finally, for some parental actions, hot temperatures can create an environment in which a child is at increased risk of harm compared to more moderate temperatures (e.g., leaving a child alone at home or in a car).

This paper sheds light on the effect of rising temperatures on child welfare by estimating the impacts of extreme temperatures on alleged and substantiated maltreatment of young children ages zero to four, those most vulnerable to maltreatment. We use data from the National Child Abuse and Neglect Data Systems (NCANDS) Child Files, an administrative census of reported maltreatment to state CPS agencies that received a CPS response (over half of maltreatment reports). Our data cover the period from 2006 to 2016. We focus on the average daily number of children per 1,000 with alleged and substantiated maltreatment by county and biweekly reporting period, as well as by a variety of case characteristics.

To measure temperature variation, we use modeled gridded daily weather data from the PRISM Climate Group at Oregon State University. We focus on the maximum of the daily maximum temperature over the biweekly period. Our empirical strategy exploits variation in temperatures within calendar month and county to control for county-specific seasonal patterns. We also include state-year fixed effects that absorb, for example, policy variation over time at the state level, as well as reporting period fixed effects that absorb national idiosyncratic shocks.

We find increases in alleged and substantiated child maltreatment among young children during hot periods (with maximum temperatures greater than 25° Celsius or 77° Fahrenheit). In particular, we estimate that in reporting periods when the maximum temperature reaches 35°C, the maltreatment allegation rate increases by 3.87% relative to the mean, while the substantiated victimization rate increases by 5.16%. We provide evidence suggesting that our results are not driven by changes in reporting. Additional analysis identifies acute neglect, particularly involving law enforcement reporting, as the temperature-sensitive maltreatment type. Combining predictions from 25 global climate models and 1,000 bootstrap replications, we estimate that over the period 2061-2080, climate change will lead to an annual average increase in the number of young children with a substantiated maltreatment case per county-day of 13% over the current mean, with 95% of our 25,000 estimates being positive.

Our work identifies a novel channel through which climate change will adversely impact child welfare—by increasing the probability of extreme temperatures and, as a result, child maltreatment. Importantly, we find similar effects of temperatures across counties with different “normal” climates and we do not find evidence that air conditioning mitigates the temperature-maltreatment relationship. These patterns suggest that adaptation to climate

change might not be sufficient to undo these negative predicted effects.

2 Background

2.1 Defining and measuring child maltreatment

Child maltreatment refers to all types of abuse and neglect of children under age 18 by an adult serving in a custodial role (e.g., parent, caregiver, coach, clergy). In the US, federal legislation, state civil statutes, and state criminal statutes provide formal definitions of child maltreatment. At the federal level, the Child Abuse Prevention and Treatment Act (CAPTA) (42 U.S.C.A. Â§ 5106g), originally enacted in 1974, identifies a set of acts that constitute child maltreatment:

at a minimum, any recent act or failure to act on the part of a parent or caretaker, which results in death, serious physical or emotional harm, sexual abuse or exploitation, or an act or failure to act which presents an imminent risk of serious harm.

CAPTA provides guidance and funding to states to support their efforts related to child maltreatment including prevention and response, among other activities. The Act has been amended and reauthorized several times.² Definitions of child maltreatment in state civil statutes permit intervention by state child protective service (CPS) agencies while criminal statutes provide grounds for arrest and prosecution of offenders.

Child maltreatment is most prevalent among children under age one and 25% of child maltreatment victims are under age three ([American Academy of Pediatrics, 2022](#)). Victimization rates are higher among American-Indian and Alaska Native children, and among Black children compared to children of other races and ethnicities. Most victims of child maltreatment, about 70% in 2019, are first-time victims ([U.S. Department of Health and Human Services, Administration for Children and Families, Children’s Bureau, 2021](#)).

Most states recognize four types of child maltreatment: physical abuse, neglect, sexual abuse/exploitation and emotional abuse. Specific definitions of child maltreatment within these categories vary across states.³ Among types of child maltreatment, neglect is the most complex and most common, accounting for over three-fourths of confirmed cases of child maltreatment in the US in 2020 ([U.S. Department of Health and Human Services,](#)

²See [US Department of Health and Human Services, Children’s Bureau \(2019a\)](#).

³[U.S. Department of Health and Human Services, Administration for Children and Families, Children’s Bureau \(2022\)](#) provides more detailed information on variation in civil definitions of child maltreatment across states.

[Administration for Children and Families, Children’s Bureau, 2021](#)). Broadly, neglect occurs when the omission of care by a parent or caregiver places a child at risk of serious harm. As with child maltreatment more generally, states statutes vary in their definitions of neglect ([US Department of Health and Human Services, Children’s Bureau, 2018](#)). The most commonly recognized categories of neglect include physical neglect (e.g., failure to provide basic needs like nutrition or hygiene); medical neglect (e.g., failure to provide adequate medical care); emotional neglect (e.g., failure to provide emotional support, exposing a child to intimate partner violence or substance use); inadequate supervision (e.g., leaving young children home alone, leaving children with inappropriate caregivers); and educational neglect (e.g., failure to enroll a child, chronic absenteeism). A finding of neglect can result from a single incident of the above (e.g., leaving a young child alone in a car). In other cases, neglect is chronic, resulting from a caregiver repeatedly failing to meet a child’s basic physical, developmental, and/or emotional needs over a period of time ([US Department of Health and Human Services, Children’s Bureau, 2019b](#)).

The determination that a child is a victim of maltreatment begins with a referral of suspected child maltreatment to a CPS agency. CPS referrals come from various sources including non-professionals (e.g., neighbors, family members) and professionals with whom children interact (e.g., teachers, physicians). All states have mandatory reporting laws related to child maltreatment; as of 2019, 47 states have laws that identify specific professionals as mandatory reporters ([U.S. Department of Health and Human Services, Administration for Children and Families, Children’s Bureau, 2019](#)). Most frequently these include social workers, healthcare professionals, law enforcement officers, and educational and childcare personnel. Once received, CPS evaluates whether or not the referral meets agency criteria for an investigation or alternative response (e.g., provision of services). If so, then the referral is “screened in.”⁴ In 2019, about 54% of CPS referrals were screened in. Once a referral is screened in, it is referred to as a report. In 2019, almost 70% of reports were submitted by professional sources ([U.S. Department of Health and Human Services, Administration for Children and Families, Children’s Bureau, 2021](#)). After investigation by the CPS agency, the report receives a disposition. If the report disposition finds that the alleged maltreatment is substantiated or indicated, then the child or children on the report are considered to be victims of child maltreatment.

Because the true amount of child maltreatment is unobserved, measurement is an important consideration when studying child maltreatment. As described in more detail in

⁴According to [U.S. Department of Health and Human Services, Administration for Children and Families, Children’s Bureau \(2021\)](#), referrals are screened out if a response by another agency is more appropriate, or if the referral does not contain sufficient information, among other reasons.

the next section, our analysis relies on administrative data from state CPS agencies. Given the extent of underreporting and the failure to substantiate valid allegations (Waldfoegel, 1998), maltreatment measures based on administrative data, like those we construct, likely underestimate the true amount of child maltreatment (Lindo and Schaller, 2014). Bald et al. (2022) emphasize that prevalence measures based on administrative data only reflect child maltreatment reported to CPS agencies.⁵ Bullinger et al. (2021) underscore the importance of addressing potential sources of measurement error in administrative data, in particular when making comparisons across states and across times due to the potential for important sources of cross-sectional and temporal variation in child maltreatment measures. For example, the definition of maltreatment and the processes for reporting suspected maltreatment may vary across states and within a state over time. In addition, children’s exposure to potential mandatory reporters may vary over calendar time and over their lives. For example, school-aged children in particular are more likely to be exposed to mandatory reporters when they are in school (e.g., during the school year as opposed to over summer break).⁶

2.2 Potential mechanisms linking temperature and child maltreatment

Potential mechanisms linking ambient temperature and measured child maltreatment fall into three categories: (1) effects of temperature on the mental health and behavior of adults and children, (2) effects of temperature on child and parental time use, and (3) effects of temperature on children’s exposure to potential professional or nonprofessional reporters, including CPS workers, police officers, medical providers, teachers, neighbors, and childcare providers. Changes in behavior (such as aggression) and time use (such as parents’ work hours) will lead to changes in the true incidence of child abuse and neglect (Bullinger et al., 2021), while changes in exposure to reporters would change the likelihood that a given incident is reported and recorded in our data. In considering potential channels, we can also differentiate between factors that might lead to physical abuse of a child, such as adult aggression, economic stress, or child behavior; and factors that might lead to acute neglect, including adult cognitive capacity, childcare decisions, and environmental risk factors like

⁵Bullinger et al. (2021) discuss additional advantages and disadvantages of administrative data for measuring child maltreatment compared to other potential data sources.

⁶Benson et al. (2022) explore child maltreatment reporting by educational professionals. Their results suggest that more time spent in school increases reports of child maltreatment and that the increased reporting by educational professionals represents new, high-quality reporting as opposed to over- or duplicate reporting.

outdoor play and hot cars.⁷

Numerous studies have documented that high temperatures lead to increases in violence, criminal activity, and aggression among adults, causing increases in both inter-group and interpersonal conflict (see [Burke et al. \(2015b\)](#) for a review). Proposed mechanisms for this association include biological and economic stressors and also changes in activities and time use. [McCormack \(2023\)](#) finds that children experience more disciplinary referrals at school when the weather is hot, suggesting that children’s behavior is also adversely affected by warm temperatures. Meanwhile, cold temperatures have been found to have adverse effects on adult mental health and well-being ([Janzen, 2022](#); [Baylis, 2020](#)), but seem to have a chilling effect on violence and criminal activity, perhaps from reduced activity and social interaction ([Ranson, 2014](#)). While few studies have considered the association between temperature and violence toward children, [Henke and Hsu \(2020\)](#) find that hot temperatures increase intimate partner violence (IPV) while [Sanz-Barbero et al. \(2018\)](#) find increases in intimate partner femicide in the days following heat waves. Increases in IPV could be associated with increases in child maltreatment and could also cause families to have more encounters with law enforcement, which could lead to more reporting of existing child maltreatment.

With respect to parental decision-making and child neglect, [Almås et al. \(2019\)](#) and [Taylor et al. \(2016\)](#) document that thermal stress from extreme temperatures affects judgment, decision-making, and cognitive capacity. Importantly, extreme temperatures increase the potential degree of danger associated with poor parenting decisions. For example, extreme heat and cold cause unsafe conditions for leaving a young child alone in a car; thus, doing so may increase the likelihood of a maltreatment referral if the weather is extreme but not when temperatures are moderate. Hot car deaths, in particular, occur annually in the US and are concentrated entirely among children under the age of five ([kidsandcars.org, 2023](#)). Moreover, when the weather is warmer, parents may also allow young children to play outside without adult supervision, and children could wander into traffic or be lost, resulting in police reports and acute neglect allegations.

In addition to direct changes in behavior and parenting capacity, there may also be indirect changes in the incidence of neglect and abuse that occur because temperature alters parent and child time use. For example, [McCormack \(2023\)](#) shows that school absences increase in warmer temperatures. Chronic absenteeism may result in an allegation of educational neglect. Parental labor supply might also change, which could affect maltreatment by affecting the time that parents spend with children ([Lindo et al., 2018](#)). Importantly,

⁷Chronic child neglect, while an important component of maltreatment, is unlikely to immediately respond to contemporaneous changes in temperature, so we focus here on the determinants of acute neglect.

changes in time use may also result in changes in exposures to potential reporters of maltreatment by changing the degree of interaction with friends, neighbors, teachers, doctors, law enforcement, and even CPS workers. For example, in warm weather, families may spend more time outdoors in public places. Meanwhile during winter weather, people may not interact as often and appointments with doctors and CPS workers may be delayed.

The extent to which these various channels operate depends on a range of factors, one of which is child age. By focusing on young children, we hope to distinguish a temperature-child maltreatment relationship from merely a temperature-reporting of child maltreatment relationship. Our focus on young children is motivated by a number of factors. First, most children ages four and under are not yet enrolled in school and thus are less likely to be exposed to the seasonal patterns of involvement with educational personnel, who are an important source of mandatory reporting (Benson et al., 2022). Second, compared to older children, young children are more dependent upon parents to ensure their safety and meet their basic needs. As a result of their dependence, the same parental action for a young child may involve significant risk of harm to the child, and therefore potential child maltreatment, but only minimal risk for an older child (e.g., allowing a child to play outside without supervision). Third, some physical injuries (e.g., fractures) that might arise due to accidents or abuse are more common among older children who are more mobile and active.⁸ Thus, identifying maltreatment as the likely source of some physical injuries for older children may be more challenging compared to younger children. After introducing the data in the next section, we explore differences in the patterns of maltreatment for young children and for school aged children in the raw data; this exercise further supports our focus on the former.

3 Data

To explore the relationship between exposure to extreme temperatures and child maltreatment, we combine data from two primary sources, the National Data Archive on Child Abuse and Neglect (NDACAN) and the PRISM Climate Group. Data from the former allow construction of child maltreatment outcomes while the latter provide the necessary weather information.

We form child maltreatment measures using the National Child Abuse and Neglect Data System (NCANDS) Child Files, which provide administrative data from on referrals (i.e., reports) of child maltreatment to CPS agencies and the outcomes of subsequent investigations.

⁸U.S. Department of Justice guidance to law enforcement on investigating potential child physical abuse identifies "injuries on children who are not mobile" and "injuries that routine, age-appropriate supervision of the child should have prevented" as red flags that necessitate further scrutiny (Farley et al., n.d.).

These data were obtained through a restricted data agreement with NDACAN.⁹

For a given year, the NCANDS Child Files represent a census of screened-in CPS referrals that received a disposition in the federal fiscal year. State reporting under NCANDS is voluntary but most states and the District of Columbia consistently report during our study period. We use the NCANDS Child Files for fiscal years 2006-2018. These data contain case-level information, where a case denotes a report-child pair. For cases that appear in multiple Child Files, we follow the recommendation in the NCANDS User’s Guides to keep only the instance in the most recent fiscal year. For each case, we then identify the calendar year in which the suspected case was reported to the state CPS agency (as opposed to the fiscal year in which the case received a disposition) and focus on cases reported between 2006 and 2016. About 98 percent of cases receive a disposition within two years of being reported (e.g., a report submitted in 2006 is almost certain to appear in the 2006 or 2007 Child Files). Thus, collectively the Child Files for 2006 through 2018 cover almost all child maltreatment referrals received between 2006 and 2016.

Two features of the NCANDS data inform our research design. First, the most granular geographic identifier available in the data is the county. Furthermore, county identifiers are available only for cases coming from counties with at least 1,000 total cases in the fiscal year. Additionally, county is masked in the event of a child’s death. Second, we observe the bimonthly period, between the 1st and 15th days of the month or between the 16th and the end of month, during which the report of child maltreatment was made. The exact report and incident dates are masked.¹⁰ Given these features of the data, we form a balanced county-by-bimonthly period panel representing 424 counties in 42 states. Each county in the panel appears in all Child Files between 2006 and 2018. Appendix A provides more details on construction of the panel. While the sample counties represent only 14% of US counties, collectively they account for almost two thirds of the US child population.

We form two primary maltreatment outcomes, the allegation rate and the victimization rate, both measured at the county-by-bimonthly period level. Because the number of days

⁹The NCANDS Child Files (FFY2006v5, FFY2007v6, FFY2008v5, FFY2009v6, FFY2010v5, FFY2011v5, FFY2012v5, FFY2013v5, FFY2014v4, FFY2015v4, FFY2016v3, FFY2017v1, FFY2018v2) were provided by NDACAN at Cornell University, and have been used with permission. The data were originally collected under the auspices of the Children’s Bureau. Funding was provided by the Children’s Bureau, Administration on Children, Youth and Families, Administration for Children and Families, U.S. Department of Health and Human Services. The collector of the original data, the funding agency, NDACAN, Cornell University, and the agents or employees of these institutions bear no responsibility for the analyses and interpretations presented here. The information and opinions expressed in this paper reflect solely the opinions of the authors.

¹⁰Using a restricted version of the NCANDS no longer available to researchers, [Benson et al. \(2022\)](#) observed exact incident and report dates for some cases. For about 92% of these cases, incident and report dates were the same and for another 6%, the dates were within one week of each other.

is not constant across bimonthly periods, we construct maltreatment measures that reflect daily averages within the bimonthly period. The allegation rate is the number of children per 1,000 with at least one screened-in child maltreatment report on an average day in the county-biweekly period. The victimization rate reflects the number of children per 1,000 considered to be victims of child maltreatment on an average day in the county-biweekly period. A child is considered to be a victim if a maltreatment allegation is determined by investigation to be substantiated or indicated according to the definition under state law. Annual child population data by county is from the Surveillance, Epidemiology, and End Results (SEER) Program. We use additional information available in NCANDS to further refine the child maltreatment measures, focusing on type of abuse and reporter.¹¹ Changes over our sample period in the allegation and victimization rates are presented in Figure A1a, which depicts patterns similar to those documented by Evans et al. (2022). The annual average allegation rate increases over the sample period while the annual average victimization rate declines until about 2013.

Maltreatment patterns vary seasonally (Figure A1b). Both maltreatment measures are generally lower in November and December and the summer months of June through August. Importantly for our analysis, the raw data reveal stark differences in the seasonal pattern of allegation and victimization rates for young children (age 0 to 4) and school-aged children (age 5 to 17) (Figure 1). Figure 1b suggests that the drop in maltreatment during the summer months visible in Figure A1b is driven by school-aged children; maltreatment among young children is not substantially lower in summer months (Figure 1a). Furthermore, the seasonal patterns of child maltreatment based on reports from professional sources and non-professional sources differ markedly between young (Figure 1c) and school-aged children (Figure 1d).¹² These differences may result from more variation in exposure to mandatory reporters among school-aged children across the year (i.e., less exposure to teachers during the summer when school is out) and/or other sources of variation (e.g., time use). Given this observation and the fact that maltreatment is most prevalent among the youngest children, our analysis focuses on children ages 0 to 4.

Figure A2 shows spatial variation across sample counties in the median victimization rate for young children between 2006 and 2016. Among sample counties, victimization rates are highest in counties in New York and Massachusetts. According to U.S. Department of Health and Human Services, Administration for Children and Families, Children’s Bureau (2021) Kentucky and West Virginia had the highest victimization rate (for children of all ages) among US states in 2019; victimization rates for New York and Massachusetts were about

¹¹Table A1 reports means and standard deviations for all outcome measures.

¹²See Appendix A for details on how we classify reporters as professional and non-professional.

twice the national average. Because of the NCANDS masking convention, few counties in Kentucky and West Virginia (i.e., less populous states) are represented in our sample. Noting this feature, the spatial pattern of victimization depicted in Figure A2 is broadly consistent with state-level variation documented elsewhere.

To measure temperature variation, we use the AN81d modeled daily weather data from the PRISM Climate Group at Oregon State University (PRISM Climate Group, Oregon State University, 2014).¹³ The 4x4 kilometer grid-level data on temperature and precipitation are interpolated from more than 10,000 weather stations based on monitored measures of maximum and minimum daily temperature, as well as total daily precipitation, using a model that accounts for factors that influence local climate (e.g., elevation, wind direction). For each county, we assign the weather measures associated with the grid cell that contains the county centroid. Because the data only cover the contiguous United States, we obtain county-level weather measures for the 424 counties in our balanced maltreatment sample.¹⁴ We construct weather variables at the county-bimonthly level. Following related work (e.g., Barreca and Schaller (2020), Park et al. (2020)), we focus on daily maximum temperatures. Specifically, we use the maximum of the daily maximum temperatures over the bimonthly period for each county. We construct indicators that equal one if this temperature falls below 0 degrees Celsius, within each of 5-degree Celsius bins up to 35, or above 35 degrees Celsius. The omitted temperature bin is 15 to 20 degrees Celsius or 59 to 68 degrees Fahrenheit. We also construct a precipitation variable that reflects the average daily precipitation in decimeters over the reporting period by county.

Finally, we extract data from SEER, the Small Area Income and Poverty Estimates (SAIPE) program at the Census Bureau, and the Bureau of Labor Statistics. We use these data to create county-by-year control variables including those measuring race and ethnicity (e.g., share Black, share Hispanic) and economic conditions (e.g., share of children in poverty, median household income, unemployment rate). Appendix Table A2 provides summary statistics for control variables.

¹³Daly et al. (2002) note that observational weather can be sparse and unrepresentative while Park et al. (2020) note potential endogeneity concerns arising from correlations between the availability of monitoring stations and local economic or climate conditions. See Baylis (2020) and Dundas and von Haefen (2020) for recent environmental economics applications of the PRISM data.

¹⁴The median county in our dataset has four weather stations providing daily temperature data underlying the PRISM modelled data. Twelve counties have no weather station. The median station in sample counties had valid temperature data for 3,276 days out of the 4,018 days in our sample period.

4 Empirical model and results

Consistent with other studies that measure the impacts of temperature exposure, we estimate high dimensional fixed effects models of the following form

$$\begin{aligned}
Y_{it} = & \sum_j \beta^j \text{MaxTemp}_{it} \text{ in Bin}_j \\
& + \sum_j \sum_{l \in \{1,2\}} \gamma_l^j \text{MaxTemp}_{it} \text{ in Lagged/Lead Period } l \text{ in Bin}_j \\
& + \pi X_{it} + \alpha Z_{iy(t)} + \eta_{im(t)} + \phi_{s(i)y(t)} + \delta_t + \varepsilon_{it}
\end{aligned}$$

where Y_{it} denotes the child maltreatment outcome in county i and bimonthly reporting period t . The MaxTemp_{it} in Bin_j is an indicator variable that equals one if the maximum of the daily maximum temperatures in county i during reporting period t lies within the 5-degree Celsius bin and zero otherwise. The model also includes two 2-week lags and leads of the temperature indicators. X_{it} denotes average daily precipitation in county i and bimonthly reporting period t as well as two 2-week leads and lags of precipitation. $\alpha Z_{iy(t)}$ denotes a set of county-by-year controls. We include county-month fixed effects, $\eta_{im(t)}$, to control for county-specific seasonality; state-year fixed effects, $\phi_{s(i)y(t)}$, to control for changes to state-specific policies over time as well as state economic trends; and reporting period fixed effects, δ_t , to control for idiosyncratic national shocks that may explain variation in allegation and victimization rates. We cluster standard errors at the county level.

Figure 2 plots the estimated coefficients and associated 95% confidence intervals on three sets of temperature variables: (1) those associated with contemporaneous exposure (i.e., the estimated coefficients of primary interests) are indicated by circles; (2) those associated with lagged exposure are represented as diamonds; (3) those associated with future exposure (i.e. leads) are denoted with triangles. Panel 2a shows results for the allegation rate while panel 2b depicts results for the victimization rate. The excluded temperature variable indicates temperatures between 10 and 20 degrees Celsius (or 59 to 68 degrees Fahrenheit). In both panels, most of the estimated coefficients on leads and lags of temperature are not statistically different from zero. Overall, the pattern of results suggests that exposure to hot temperatures is associated with more child maltreatment using both of these outcome measures.

Table A2 provides estimated coefficients and standard errors for socioeconomic and precipitation control variables. Our results are broadly consistent with the literature; we find increases in the allegation and victimization rates associated with higher levels of child poverty and lower income. A higher share Black is associated with increases in the allega-

tion rate but not the victimization rate. A higher share Hispanic is associated with lower allegation and victimization rates. We do not find a statistically significant relationship between the overall unemployment rate and child maltreatment.¹⁵ Higher contemporaneous precipitation is associated with lower allegation and victimization rates; a one standard deviation in precipitation is associated with about a 0.01 standard deviation decrease in the allegation and victimization rates. We find no relationship between immediate past and future precipitation and child maltreatment.

The first column of Table 1 reports the estimated coefficients on the highest temperature bin variable, 35+ degrees Celsius, based on the contemporaneous measure (i.e., the right-most circles in panels (a) and (b) of Figure 2). Standard errors clustered at the county level are reported in parentheses while standard errors clustered at the state level are reported in brackets for comparison.¹⁶ For the allegation rate model in Panel A, the estimated coefficient represents the increase in children age 0 to 4 with allegation(s) per 1,000 on an average day in the bimonthly reporting period associated with the highest daily maximum temperature being at or above 35°C compared to more moderate temperatures (i.e., 15 to 20°C). Evaluated at the mean allegation rate of 0.208 children per 1,000, this represents a 3.87% increase. For the victimization rate in Panel B, the estimated coefficient is associated with a 5.16% increase when evaluated at the mean of 0.0521 children per 1,000. If all counties in our sample experienced this change in temperature in one bimonthly reporting period, then this would translate into about 48 more kids age 0 to 4 per 1,000 with maltreatment allegation(s) and about 16 more victims per 1,000 among sample counties in that single bimonthly reporting period.

The remaining columns of Table 1 explore robustness of the results reported in column (1). Columns (2) through (4) consider different sets of fixed effects, column (5) removes temperature leads and lags, and column (6) includes county population weights. Estimated coefficients are stable across these alternative specifications. We also explore the robustness of our main results to defining temperature bins differently. Figure A3 shows that we find a similar pattern of results when we use coarser and finer temperature bins, suggesting our main results are not the artifact of sparsely populated bins. In particular, in panels (a) and (c) we define bins of 10°C: below 0, 0-10, 10-20 (the omitted category), 20-30, and higher than 30. Results for the victimization rate are noisier using this specification, but still positive at high temperatures. In panels (b) and (d), we instead use finer bins of 3°C spanning the range from below 0 to above 36°C, with 15-18 as the omitted category. Effects

¹⁵This is consistent with [Lindo et al. \(2018\)](#).

¹⁶Standard errors clustered at the state level account for additional spatial correlation across counties within states that might be introduced, for example, due to modeling of weather data.

appear to increase with temperature until they plateau for temperatures above about 27°C.

Finally, we explore sensitivity to the assignment of weather variables to counties. Instead of relying on the location of the county centroid as we do for our main results, we assign weather variables to counties using the whole county surface. Specifically, for each county we average weather variables across grid cells that intersect the county polygon by weighing observations by the fraction of county surface they cover. Figure A4 shows that using temperature bins and precipitation controls constructed from these averages does not affect our estimates in a meaningful way.

4.1 Evidence on mechanisms

We investigate the mechanisms driving this estimated increase in *measured* maltreatment during hot periods. First, hotter temperatures might change reporting rates, selection into reporting, or the ability of CPS to conduct thorough investigations. Second, hotter temperatures might increase underlying maltreatment rates through physiological changes affecting cognition, behavior, and mood of children and carers. Third, hotter temperatures might exacerbate maltreatment patterns already known to CPS, causing “repeat” cases among children already exposed to maltreatment (intensive margin), or might cause “one off” incidents that bring new children into the CPS system (extensive margin).

To assess whether hotter temperatures affect reporting, we first look at an alternative outcome, the substantiation rate. The substantiation rate is the fraction of children who are found to be victims of child maltreatment among those with allegation(s). If hot temperatures merely affect the reporting of child maltreatment but not the underlying level, then we would expect changes in the marginal severity of reported cases. This would result in variation in the substantiation rate with temperatures. For example, hot temperatures might affect the temperament of likely mandatory reporters, causing them to lower their bar for reporting. Alternatively hot temperatures may change access to potential reporters: for instance, a neighbor might hear noises through open windows or notice bruises on children playing outside while wearing little clothing. In these two examples, we would expect to see a lower substantiation rate at higher temperatures (assuming in the latter two cases the allegations are not substantiated). By contrast, if low temperatures affect the ability of CPS to successfully substantiate a case, for example by affecting their ability to conduct home visits (e.g., on snowy days), then we might expect substantiation rates to increase with temperatures. Figure 2c depicts the estimated relationship between temperature and the substantiation rates. The estimated coefficients on the hot temperature variables are close to zero and statistically insignificant. The results for cold temperatures are noisier

but overall we fail to find compelling evidence of a temperature-substantiation rate relationship, suggesting that our results are not merely reflecting changes in the reporting of child maltreatment at different temperatures.

Thus far in our analysis, the two main outcome measures, the allegation and the victimization rates, reflect all reports of maltreatment, regardless of the report source. We may learn more about the underlying mechanisms by distinguishing among different types of reporters. For example, suppose the reporting decisions of mandatory reporters, many of whom receive specific training on identifying likely child maltreatment, are less subject to any bias that arises from the physiological impacts of heat exposure. If so, then we would observe a different pattern for the relationship between temperature and child maltreatment, depending on the source of the maltreatment report. We first explore this question by differentiating between professional and non-professional report sources. Professional reporters include educational, law, and medical personnel among other categories of likely mandatory reporters. Non-professional reporters include neighbors, friends, etc.¹⁷ We use this distinction to create allegation and victimization rate measures by report source. Figure 3 shows results, focusing on the estimated coefficients and 95% confidence intervals for the contemporaneous temperature variables.¹⁸ The left-hand panels report results for the allegation rate while the right-hand panels show results for the victimization rate. The pattern of results is similar across all four panels, with increased child maltreatment at higher temperatures. Thus, we do not find strong evidence of a differential impact of temperatures on child maltreatment when we distinguish by broad reporter category.

Next, we further differentiate among categories of professional reporters as a child’s exposure to different types of mandatory reporters may vary with temperature. For example, young children may be less likely to be in pre-school or daycare in the summer months when temperatures are higher, thus reducing their exposure to educational personnel. Figure 4 shows the estimated relationship between temperature and the victimization rate for four types of professional reporters.¹⁹ We fail to detect increased victimization rates with higher temperatures for three of the four professional reporter types: social services, education, and medical personnel. For law enforcement personnel, however, the results in Panel 4d are similar to our main results. Evaluated at the mean victimization rate for reports from law enforcement, the estimated coefficient on the 35+ temperature bin variable represents about a 2% increase. Notably, law enforcement is the largest reporting source among professional reporters (Table A1). The pattern of results depicted in Figure 4d could arise both

¹⁷See the appendix for more details on the specific types of reporters included in the two categories.

¹⁸The model includes the temperature lead and lag variables but they are excluded from the figure to highlight the estimated coefficients of interest.

¹⁹Figure A5 shows results for the allegation rate.

if strangers call law enforcement, for example upon seeing an unattended child; or if law enforcement are investigating a crime scene at which children are present, for example if law enforcement is called to intervene in a case of intimate partner violence or to investigate a drug manufacturing operation, both of which would likely result in an allegation and potential substantiation of child neglect. Note that the patterns we observe are unlikely to be driven by increased police presence on hot days as [Obradovich et al. \(2018\)](#) find that high temperatures decrease police activity (e.g., traffic stops).

Having established that changes in reporting alone are not the main drivers of our estimated effects of hot temperatures on maltreatment, we explore what types of maltreatment are most affected by heat. Because heat has documented effects on aggression and mood, as well as on cognitive function, hotter periods could be associated with increases both in physical abuse and in neglect deriving from caregiver actions that might endanger the child. The channel linking exposure to extreme temperatures and sexual abuse is less clear. Figure 5 shows the estimated relationship between contemporaneous temperature and the victimization rate for three types of child maltreatment: physical abuse, neglect, and sexual abuse.²⁰ We find no evidence of increased physical or sexual abuse at high temperatures (Figures 5a and 5c, respectively). Rather, Figure 5b shows that the estimated effects of hot temperatures on maltreatment of young children reported in Figure 2 are driven by increased neglect, the most common maltreatment type.

Finally, we examine whether our estimated maltreatment effects are due to changes in the intensive or extensive margin; do hot temperatures increase maltreatment of children already engaged with CPS or do they bring "new" children into the CPS system? While we are unaware of estimates that parse the costs to children of CPS engagement and the costs to children of child maltreatment, proponents of abolishing the CPS system argue the former costs are substantial, in particular for Black children ([Roberts, 2022](#)). If this is the case, then exploring the intensive and extensive margin responses is important for understanding the overall and distributional implications of heat exposure. To do so, we use additional information in the NCANDS on whether or not a child is known to be a victim of past maltreatment.²¹ Figure 6 shows that the overall estimated effects of hot temperatures on child maltreatment we find are driven by increased "first incidents". The estimated coefficients on the hot temperature bin variables for prior victims of maltreatment (panels (a) and (b)) are positive but smaller and not statistically different from zero.

²⁰Figure A6 shows results for the allegation rate.

²¹The NCANDS variable we use for this information, *chprior*, is missing for about 15% of the child-level sample; children with missing values are not reflected in the child maltreatment measures we use for this component of our analysis.

4.2 Heterogeneity

Prior work on the relationship between exposure to extreme temperatures and child outcomes (e.g., test scores, gestational length) has found moderating effects of air conditioning. To explore whether air conditioning has moderating effects in our setting, we use estimates of county-level air conditioning penetration in 2005 from [Park et al. \(2020\)](#).²² In the median US county in 2005, 74% of households have air conditioning according to this measure. We create an indicator variable for counties with penetration rates above this value and then create interactions between this indicator variable and the contemporaneous temperature bin variables. We include these interactions in the main specification allowing for the relationship between contemporaneous temperature and child maltreatment to vary based on air conditioning penetration. Figure 7 reports the estimated coefficients and 95% confidence intervals for the contemporaneous temperature variables (circles) and sums of these estimated coefficients and those on interactions between the contemporaneous temperature bin variables and the indicator for above-median air conditioning penetration in 2005 (diamonds). We find no substantial differences in the temperature-maltreatment relationships for counties below and above the median air conditioning penetration rate. Thus, at least based on this historical measure, we fail to detect a moderating impact of air conditioning. This result reinforces our earlier null findings for physical abuse. If our main results were driven by parents becoming more physically aggressive towards children when temperatures are high (and that behavior resulted in child maltreatment allegations and/or substantiations), then we might expect to see a moderating effect of air conditioning, which we do not detect. Of course it's also possible that air conditioning could mitigate cognitive effects resulting in neglect but we do not find evidence of this.

We now explore whether habituation to hot temperatures attenuates the temperature-maltreatment relationship by splitting the balanced sample of counties by tercile based on the average annual number of hot days (i.e., daily maximum temperature of 35°C or above) during the sample period. Counties in the first tercile have two or fewer hot days per year in an average year between 2006 and 2016; counties in the second tercile have more than two but fewer than about 12 hot days on average each year; counties in the third tercile have between about 12 and 150 hot days in an average year during the sample period. We split the sample based on this delineation and re-estimate the main specification. Each panel of Figure 8 reports estimated coefficients on the contemporaneous temperature variables from the resulting three models. The results are inconsistent with habituation to hot temperatures: estimated coefficients on the high temperature bin variables are not larger among the third

²²We thank Jisung Park for his willingness to share these estimates.

tercile counties.

As a final exercise, we conduct a split sample analysis to explore effect heterogeneity by socioeconomic variables at the county level. Specifically, we split the sample into two groups, above and below the median values of each of three economic control variables measured in 2006 (i.e., the first sample year): median household income, share of children in poverty, and the unemployment rate. Figure A7 reports the estimated coefficients and 95% confidence levels on the contemporaneous temperature bin variables with orange circles denoting results from the below median samples and blue diamonds denoting results from the above median samples. In panels A7a (allegation rate) and A7b (victimization rate), the estimated coefficients on the high temperature bin variables are larger for the below median household income sample. A similar pattern appears in panels A7c and A7d when we split the sample by the share of children in poverty. Results for the unemployment rate are different for the two outcome variables. The estimated coefficients on the high temperature bin variables for the allegation rate models are similar in counties above and below median unemployment rate, while the estimated coefficients for the victimization rate models are slightly higher for the below median sample. Overall, these results provide some evidence of a stronger temperature-maltreatment relationship among lower income, higher poverty counties.

5 Impact of Climate Change on Child Maltreatment

This section performs a back-of-the-envelope calculation to predict the change in child maltreatment in US counties under a plausible, non-worst case, climate change scenario. For this exercise, we focus on the victimization rate. We require two inputs. First, our results in Figure 2b provide an estimate of the effect of a county registering the highest daily maximum temperature in a given temperature bin relative to more moderate temperatures (i.e., 15 to 20°C) on the number of children age 0 to 4 with a substantiated maltreatment case per 1,000 on an average day in the bimonthly reporting period; these are the $\hat{\beta}$ s we will use in this exercise. Second, we need to compute the county-level future predicted change in the maximum temperature in a biweekly period, the predicted change in \mathbf{X} s, denoted $\Delta\mathbf{X}$. Multiplying these two objects, we obtain estimates of the net effect of climate change on the victimization rate in the US under the assumptions that the temperature-maltreatment relationship will remain constant and that the temperature-maltreatment relationship we estimate extends to US counties not included in our balanced panel sample. The first assumption presumes that no policy that could mitigate this relationship is adopted, a plausible assumption considering, for example, that we find little evidence that air conditioning mitigates the effects

of temperature on maltreatment. The second assumption relates to the comparability of our sample of populous counties and those excluded due to masking issues.

To predict $\Delta\mathbf{X}$, we leverage state-of-the-art techniques and climate change projections. We use downscaled climate estimates for the period 2061-2080 from 25 global climate models included in Phase 6 of the Coupled Model Intercomparison Project, or CMIP (Meehl et al., 2007). We focus on monthly maximum temperatures, gridded at 2.5 minutes of a degree (approximately 4 kilometers).²³ To account for well-documented discrepancies between model predictions and measured and modelled current temperatures (Auffhammer et al., 2013; Ortiz-Bobea, 2021), we compute the change between future and historical climate using the same 1970-2000 climate data used to downscale the models' predictions (Fick and Hijmans, 2017). We then add this difference to 1970-2000 grid-level monthly averages of maximum temperature in the PRISM dataset to obtain the future monthly maximum temperature at the grid-level. Using county centroids, we construct projections of county-level maximum temperatures in each reporting period (constant within month) and finally construct $\Delta\mathbf{X}$.

This exercise faces two dimensions of uncertainty. First, there is uncertainty in our estimates of the temperature-maltreatment relationship (regression uncertainty), which is usually represented by confidence intervals. Second, there is uncertainty in climate projections, represented by the 25 different climate models. To account for regression uncertainty, we follow Burke et al. (2015a) and bootstrap our main specification sampling observations 1,000 times with replacement. We then multiply each of these 1,000 sets of $\hat{\beta}$ s by the $\Delta\mathbf{X}$ obtained from each of the 25 climate models, to allow for uncertainty in the climate projections. Thus, this exercise yields a vector of 25,000 bootstrap replications for each county, which reflect both sources of uncertainty.

Figure 9 plots the results of this exercise, extrapolating to 3,076 counties in the contiguous United States for which we have climate data. Panel (a) reports the estimated net change in the average daily number of children aged 0-4 with a substantiated case of maltreatment per 1,000, averaged across counties. We display the uncertainty inherent in this exercise by plotting the range of estimates obtained through the 1,000 bootstrap replications for each of the 25 climate models we use. We estimate that over the period 2061-2080, climate change will lead to an average increase of 0.007 children aged 0-4 in 1,000 with a

²³We use estimates from the following models: ACCESS-CM2, ACCESS-ESM1-5, AWI-CM-1-1-MR, BCC-CSM2-MR, CanESM5, CanESM5-CanOE, CMCC-ESM2, CNRM-CM6-1, CNRM-CM6-1-HR, CNRM-ESM2-1, EC-Earth3-Veg, EC-Earth3-Veg-LR, FIO-ESM-2-0, GISS-E2-1-G, GISS-E2-1-H, HadGEM3-GC31-LL, INM-CM4-8, INM-CM5-0, IPSL-CM6A-LR, MIROC-ES2L, MIROC6, MPI-ESM1-2-HR, MPI-ESM1-2-LR, MRI-ESM2-0, UKESM1-0-LL. We downloaded these estimates from <https://www.worldclim.org/> using the function `cmip6` in the R package `geodata`. We selected the Shared Socioeconomic Pathway 245, a "middle of the road" socioeconomic scenario corresponding to Representative Concentration Pathway (RCP) such that radiative forcing reaches a level of 4.5 Watts/m² in 2100 (Miller et al., 2021), Riahi et al. (2017).

substantiated maltreatment case per county-day, an increase of 13% over the current mean. 95% of our 25,000 estimates fall in the 0.0002-0.0361 range. Panel (b) shows heterogeneity in the estimated effects of climate change across counties. Effects appear larger in the Pacific Northwest, southern Texas, Florida, and the northern part of the so-called “sun belt”.

6 Conclusion

While a large literature identifies ongoing risk factors for child maltreatment, such as poverty, housing instability, and substance abuse, recent studies have emphasized the importance of shocks to family circumstances, including parental job loss (Lindo et al., 2018), income shocks (Rittenhouse, 2023), and natural disasters (Curtis et al., 2000). In this paper, we focus on effects that are even more acute—the effects of short-term variation in temperatures. Specifically, we exploit annual variation in maximum temperatures within calendar month and US county, above and beyond any common time shocks, in order to examine the immediate effects of temperature on maltreatment of young children. We find robust evidence that warm temperatures increase the incidence of maltreatment of young children, with no evidence of differential reporting or substantiation during warmer periods.

Though our analysis is motivated in part by the established correlation between temperatures and adult aggression and violence, we do not find any evidence of increases in child physical abuse. However, we caveat our findings noting that increased physical abuse of young children at home may be difficult to identify contemporaneously unless the abuse is severe enough to require medical care. Existing correlational evidence based on medical data is mixed, with Gruenberg et al. (2019) finding an increase in abuse-related hospital admissions on hot days, but Mehta et al. (2022) finding no increases in abusive head trauma.

By contrast, our results suggest that child neglect is measurably responsive to changes in temperature. Given the definition of maltreatment outlined in section 2.1—“an act of failure to act which presents an imminent risk of serious harm,” this implies that parents are intentionally or unintentionally allowing their young children to be in dangerous situations on warmer days. Examples of such behavior could include leaving young children alone in hot cars, or allowing them to play outdoors unattended in ways that could place them in danger (such as near a busy road). This story is supported by our findings that (1) reports from law enforcement were the only professional reporter category to be responsive to warm temperatures and (2) that the biggest increases were among children in families who had not previously interacted with the child welfare system. Inattentive parenting could result from changes in time use (for example, parents changing their work schedules) or from changes in adult cognitive capacity, which is known to decline in hot weather (Almås et al., 2019).

It is important to note that our data do not include fatal maltreatment cases, so we cannot observe deaths that may result from these dangerous encounters or extreme cases of physical abuse.

In order to better understand the mechanisms behind our findings, it would be useful to study the direct effects of temperatures on parent and child time use and on the sources and quality of childcare that families use. [McCormack \(2023\)](#) finds increases in absences among school-aged children on warmer days, suggesting that families are indeed changing their behavior when the weather is warm. However, we do not know of any family time use data with detailed geographic and temporal identifiers that can be linked with specific daily or weekly weather information.

The association between high temperatures and increases in child maltreatment that we document in our study adds to the body of literature documenting the potential adverse effects of climate change. In particular, increases in the frequency of hot days may lead to increases in the incidence of acute neglect and bring more families in contact with law enforcement and the child welfare system. Additional funding for child welfare services and affordable access to childcare could possibly mitigate these effects. However, traditional measures "mitigation" through air conditioning do not seem to moderate our estimates.

References

- Almås, Ingvild, Maximilian Auffhammer, Tessa Bold, Ian Bolliger, Aluma Dembo, Solomon M Hsiang, Shuhei Kitamura, Edward Miguel, and Robert Pickmans, “Destructive behavior, judgment, and economic decision-making under thermal stress,” Technical Report, National Bureau of Economic Research 2019.
- American Academy of Pediatrics, “Child Abuse and Neglect: What Parents Should Know, [https://https://www.healthychildren.org/English/safety-prevention/at-home/Pages/What-to-Know-about-Child-Abuse.aspx](https://www.healthychildren.org/English/safety-prevention/at-home/Pages/What-to-Know-about-Child-Abuse.aspx). Accessed: March 19th, 2023,” 2022.
- Auffhammer, Maximilian, Solomon M Hsiang, Wolfram Schlenker, and Adam Sobel, “Using weather data and climate model output in economic analyses of climate change,” *Review of Environmental Economics and Policy*, 2013.
- Bald, Anthony, Joseph J Doyle Jr, Max Gross, and Brian A Jacob, “Economics of foster care,” *Journal of Economic Perspectives*, 2022, *36* (2), 223–46.
- Barreca, Alan and Jessamyn Schaller, “The impact of high ambient temperatures on delivery timing and gestational lengths,” *Nature Climate Change*, 2020, *10* (1), 77–82.
- Baylis, Patrick, “Temperature and temperament: Evidence from Twitter,” *Journal of Public Economics*, 2020, *184*, 104161.
- Benson, Cassandra, Maria D Fitzpatrick, and Samuel Bondurant, “Beyond reading, writing, and arithmetic: The role of teachers and schools in reporting child maltreatment,” *Journal of Human Resources*, 2022, pp. 0319–10084R2.
- Bullinger, Lindsey Rose, Jason M Lindo, and Jessamyn Schaller, “Economic determinants of child maltreatment,” *Encyclopedia of law and economics (2nd ed.)*. Springer, 2021.
- Burke, Marshall, John Dykema, David B Lobell, Edward Miguel, and Shanker Satyanath, “Incorporating climate uncertainty into estimates of climate change impacts,” *Review of Economics and Statistics*, 2015, *97* (2), 461–471.
- , Solomon M Hsiang, and Edward Miguel, “Climate and conflict,” *Annu. Rev. Econ.*, 2015, *7* (1), 577–617.
- Cicchetti, Dante and Elizabeth D Handley, “Child maltreatment and the development of substance use and disorder,” *Neurobiology of stress*, 2019, *10*, 100144.

- Currie, Janet and Cathy Spatz Widom**, “Long-term consequences of child abuse and neglect on adult economic well-being,” *Child maltreatment*, 2010, 15 (2), 111–120.
- **and Erdal Tekin**, “Understanding the cycle childhood maltreatment and future crime,” *Journal of Human Resources*, 2012, 47 (2), 509–549.
- Curtis, Thom, Brent C Miller, and E Helen Berry**, “Changes in reports and incidence of child abuse following natural disasters,” *Child abuse & neglect*, 2000, 24 (9), 1151–1162.
- Daly, Christopher, Wayne P Gibson, George H Taylor, Gregory L Johnson, and Phillip Pasteris**, “A knowledge-based approach to the statistical mapping of climate,” *Climate research*, 2002, 22 (2), 99–113.
- Dundas, Steven J and Roger H von Haefen**, “The effects of weather on recreational fishing demand and adaptation: implications for a changing climate,” *Journal of the Association of Environmental and Resource Economists*, 2020, 7 (2), 209–242.
- Eckenrode, John, Molly Laird, and John Doris**, “School performance and disciplinary problems among abused and neglected children,” *Developmental psychology*, 1993, 29 (1), 53.
- Evans, Mary F, Matthew C Harris, and Lawrence M Kessler**, “The hazards of unwinding the prescription opioid epidemic: Implications for child maltreatment,” *American Economic Journal: Economic Policy*, 2022, 14 (4), 192–231.
- Fang, Xiangming, Derek S Brown, Curtis S Florence, and James A Mercy**, “The economic burden of child maltreatment in the United States and implications for prevention,” *Child abuse & neglect*, 2012, 36 (2), 156–165.
- Farley, R, B Loveless, V Palusci, and A Taroli**, “Recognizing when a child’s injury or illness is caused by abuse.”
- Fick, Stephen E and Robert J Hijmans**, “WorldClim 2: new 1-km spatial resolution climate surfaces for global land areas,” *International journal of climatology*, 2017, 37 (12), 4302–4315.
- Gruenberg, Blake C, Ryan D Brown, Michael P Anderson, and Amanda L Bogie**, “The link between temperature and child abuse,” *Trauma and Emergency Care*, 2019, 4 (2), 1–5.

- Heilmann, Kilian, Matthew E Kahn, and Cheng Keat Tang**, “The urban crime and heat gradient in high and low poverty areas,” *Journal of Public Economics*, 2021, *197*, 104408.
- Henke, Alexander and Lin chi Hsu**, “The gender wage gap, weather, and intimate partner violence,” *Review of Economics of the Household*, 2020, *18*, 413–429.
- Hsiang, Solomon M, Marshall Burke, and Edward Miguel**, “Quantifying the influence of climate on human conflict,” *Science*, 2013, *341* (6151), 1235367.
- Janzen, Benedikt**, “Temperature and Mental Health: Evidence from Helpline Calls,” *arXiv preprint arXiv:2207.04992*, 2022.
- Keenan, Heather T, Stephen W Marshall, Mary Alice Nocera, and Desmond K Runyan**, “Increased incidence of inflicted traumatic brain injury in children after a natural disaster,” *American journal of preventive medicine*, 2004, *26* (3), 189–193.
- kidsandcars.org**, “U.S. Child Hot Car Death Data Analysis from the Kids and Car Safety National Database (1990-2021), <https://www.kidsandcars.org/wp-content/uploads/2020/07/Child-Hot-Car-Deaths-Data-Analysis.pdf>. Accessed: April 12th, 2023,” 2023.
- Lansford, Jennifer E, Kenneth A Dodge, Gregory S Pettit, John E Bates, Joseph Crozier, and Julie Kaplow**, “A 12-year prospective study of the long-term effects of early child physical maltreatment on psychological, behavioral, and academic problems in adolescence,” *Archives of pediatrics & adolescent medicine*, 2002, *156* (8), 824–830.
- Lindo, Jason M and Jessamyn Schaller**, “Economic determinants of child maltreatment,” *Encyclopedia of Law and Economics*, 2014, pp. 1–10.
- , —, and **Benjamin Hansen**, “Caution! Men not at work: Gender-specific labor market conditions and child maltreatment,” *Journal of Public Economics*, 2018, *163*, 77–98.
- McCormack, Kristen**, “Education Under Extremes: Temperature, Student Absenteeism, and Disciplinary Infractions,” 2023.
- Meehl, Gerald A, Curt Covey, Thomas Delworth, Mojib Latif, Bryant McAvaney, John FB Mitchell, Ronald J Stouffer, and Karl E Taylor**, “The WCRP CMIP3 multimodel dataset: A new era in climate change research,” *Bulletin of the American meteorological society*, 2007, *88* (9), 1383–1394.

- Mehta, Nehali, Laura Bliss, Anne Trolard, and Jamie S Kondis**, “The relationship between temperature and temporal patterns and incidence of abusive head trauma in a Midwest region hospital,” *Child maltreatment*, 2022, *27* (2), 194–201.
- Mersky, Joshua P and James Topitzes**, “Comparing early adult outcomes of maltreated and non-maltreated children: A prospective longitudinal investigation,” *Children and Youth Services Review*, 2010, *32* (8), 1086–1096.
- Miller, Steve, Kenn Chua, Jay Coggins, and Hamid Mohtadi**, “Heat waves, climate change, and economic output,” *Journal of the European Economic Association*, 2021, *19* (5), 2658–2694.
- Mullins, Jamie T and Corey White**, “Temperature and mental health: Evidence from the spectrum of mental health outcomes,” *Journal of health economics*, 2019, *68*, 102240.
- Obradovich, Nick, Dustin Tingley, and Iyad Rahwan**, “Effects of environmental stressors on daily governance,” *Proceedings of the National Academy of Sciences*, 2018, *115* (35), 8710–8715.
- Office of the US Surgeon General**, “Surgeon General’s Workshop on Making Prevention of Child Maltreatment a National Priority: Implementing Innovations of a Public Health Approach: Lister Hill Auditorium, National Institutes of Health, Bethesda, Maryland, March 30-31, <https://www.ncbi.nlm.nih.gov/books/NBK47486/>. Accessed: April 12, 2023,” 2005.
- Ortiz-Bobea, Ariel**, “The empirical analysis of climate change impacts and adaptation in agriculture,” in “Handbook of agricultural economics,” Vol. 5, Elsevier, 2021, pp. 3981–4073.
- Park, R Jisung**, “Hot Temperature and High-Stakes Performance,” *Journal of Human Resources*, 2022, *57* (2), 400–434.
- , **Joshua Goodman, Michael Hurwitz, and Jonathan Smith**, “Heat and learning,” *American Economic Journal: Economic Policy*, 2020, *12* (2), 306–39.
- PRISM Climate Group, Oregon State University**, “PRISM Gridded Climate Data, <https://prism.oregonstate.edu>. Accessed: March 8th, 2023,” 2014.
- Ranson, Matthew**, “Crime, weather, and climate change,” *Journal of environmental economics and management*, 2014, *67* (3), 274–302.

- Riahi, Keywan, Detlef P Van Vuuren, Elmar Kriegler, Jae Edmonds, Brian C Oâneill, Shinichiro Fujimori, Nico Bauer, Katherine Calvin, Rob Dellink, Oliver Fricko et al.**, “The Shared Socioeconomic Pathways and their energy, land use, and greenhouse gas emissions implications: An overview,” *Global environmental change*, 2017, 42, 153–168.
- Rittenhouse, Katherine**, “Income and Child Maltreatment: Evidence from a Discontinuity in Tax Benefits,” *Available at SSRN 4349231*, 2023.
- Roberts, Dorothy**, *Torn Apart: How the Child Welfare System Destroys Black Families—and How Abolition Can Build a Safer World*, Basic Books, 2022.
- Sanz-Barbero, Belén, Cristina Linares, Carmen Vives-Cases, José Luis González, Juan José López-Ossorio, and Julio Díaz**, “Heat wave and the risk of intimate partner violence,” *Science of the total environment*, 2018, 644, 413–419.
- Taylor, Lee, Samuel L Watkins, Hannah Marshall, Ben J Dascombe, and Josh Foster**, “The impact of different environmental conditions on cognitive function: a focused review,” *Frontiers in physiology*, 2016, 6, 372.
- U.S. Department of Health and Human Services, Administration for Children and Families, Children’s Bureau**, “Mandatory reporters of child abuse and neglect, <https://www.childwelfare.gov/topics/systemwide/laws-policies/statutes/mandate/>. Accessed: March 8th, 2023,” 2019.
- , “Child Maltreatment 2019, <https://www.acf.hhs.gov/cb/report/child-maltreatment-2019>. Accessed: March 8th, 2023,” 2021.
- , “Definitions of child abuse and neglect, <https://www.childwelfare.gov/topics/systemwide/laws-policies/statutes/define/>. Accessed: March 8th, 2023,” 2022.
- US Department of Health and Human Services, Children’s Bureau**, “Acts of omission: An overview of child neglect, <https://www.childwelfare.gov/pubs/focus/acts/>. Accessed: March 8th, 2023,” 2018.
- , “About CAPTA: A legislative history, <https://www.childwelfare.gov/pubpdfs/about.pdf>. Accessed: March 8th, 2023,” 2019.
- , “Chronic Child Neglect, https://www.childwelfare.gov/pubpdfs/chronic_neglect.pdf. Accessed : March 19th, 2023,” 2019.

Waldfoegel, Jane, *The future of child protection: How to break the cycle of abuse and neglect*, Harvard University Press Cambridge, MA, 1998.

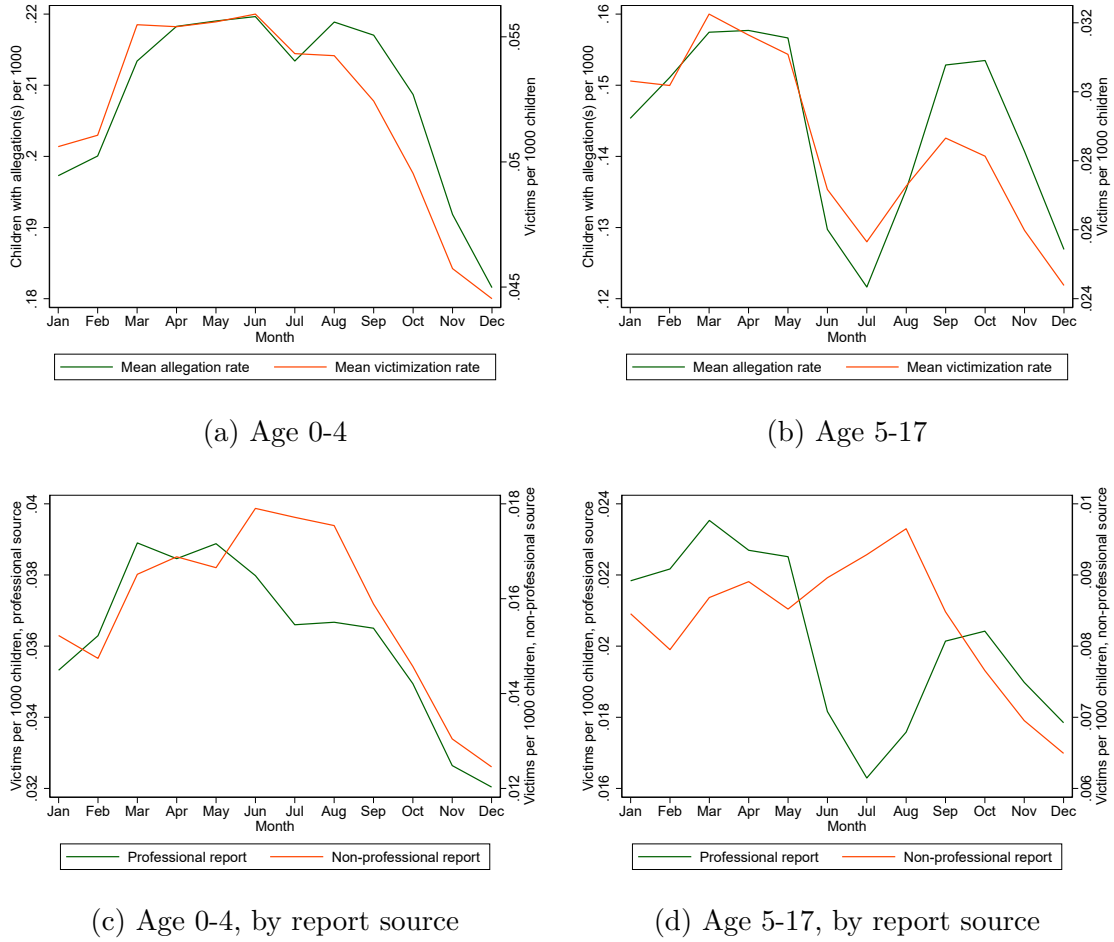
Widom, Cathy Spatz, “The cycle of violence,” *Science*, 1989, *244* (4901), 160–166.

Zielinski, David S, “Child maltreatment and adult socioeconomic well-being,” *Child abuse & neglect*, 2009, *33* (10), 666–678.

Zivin, Joshua Graff, Solomon M Hsiang, and Matthew Neidell, “Temperature and human capital in the short and long run,” *Journal of the Association of Environmental and Resource Economists*, 2018, *5* (1), 77–105.

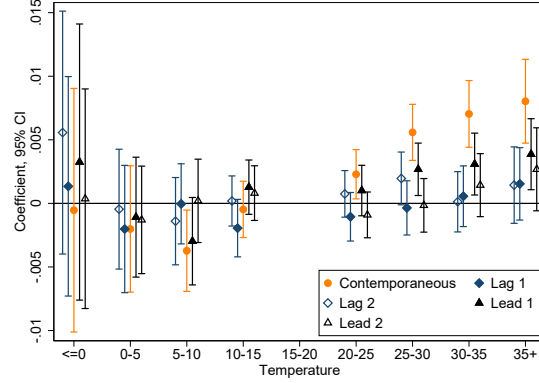
Figures and Tables

Figure 1: Seasonal variation in child maltreatment by age and report source

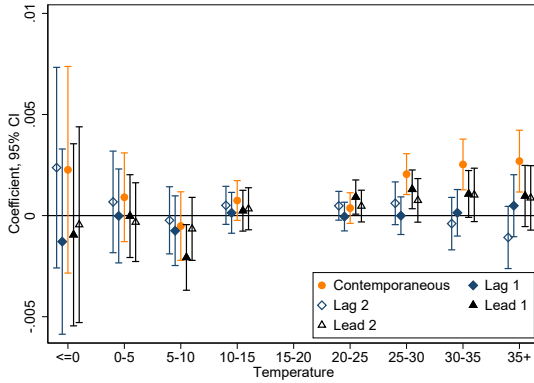


NOTES: Panels (a) and (b) of this figure plot the monthly means of the allegation and victimization rates in the bimonthly period for the sample period, 2006 to 2016 for young children (panel (a)) and school-aged children (panel (b)). The allegation rate measures the daily average number of children per 1,000 with at least one maltreatment allegation during the bimonthly reporting period. The victimization rate measures the daily average number of children per 1,000 with at least one substantiated maltreatment allegation during the bimonthly reporting period. Panels (c) and (d) plot monthly means of the victimization rate by report source category for children 0-4 and 5-17, respectively.

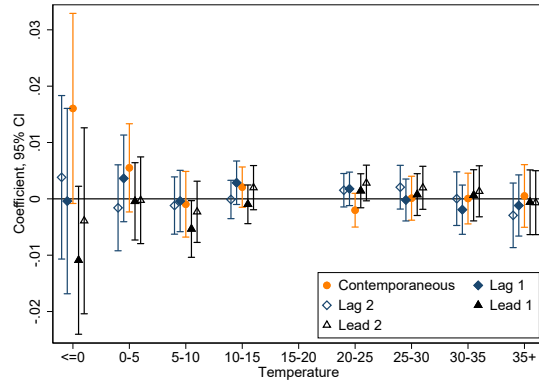
Figure 2: Relationship between Temperature and Child Maltreatment for Young Children



(a) Allegation rate



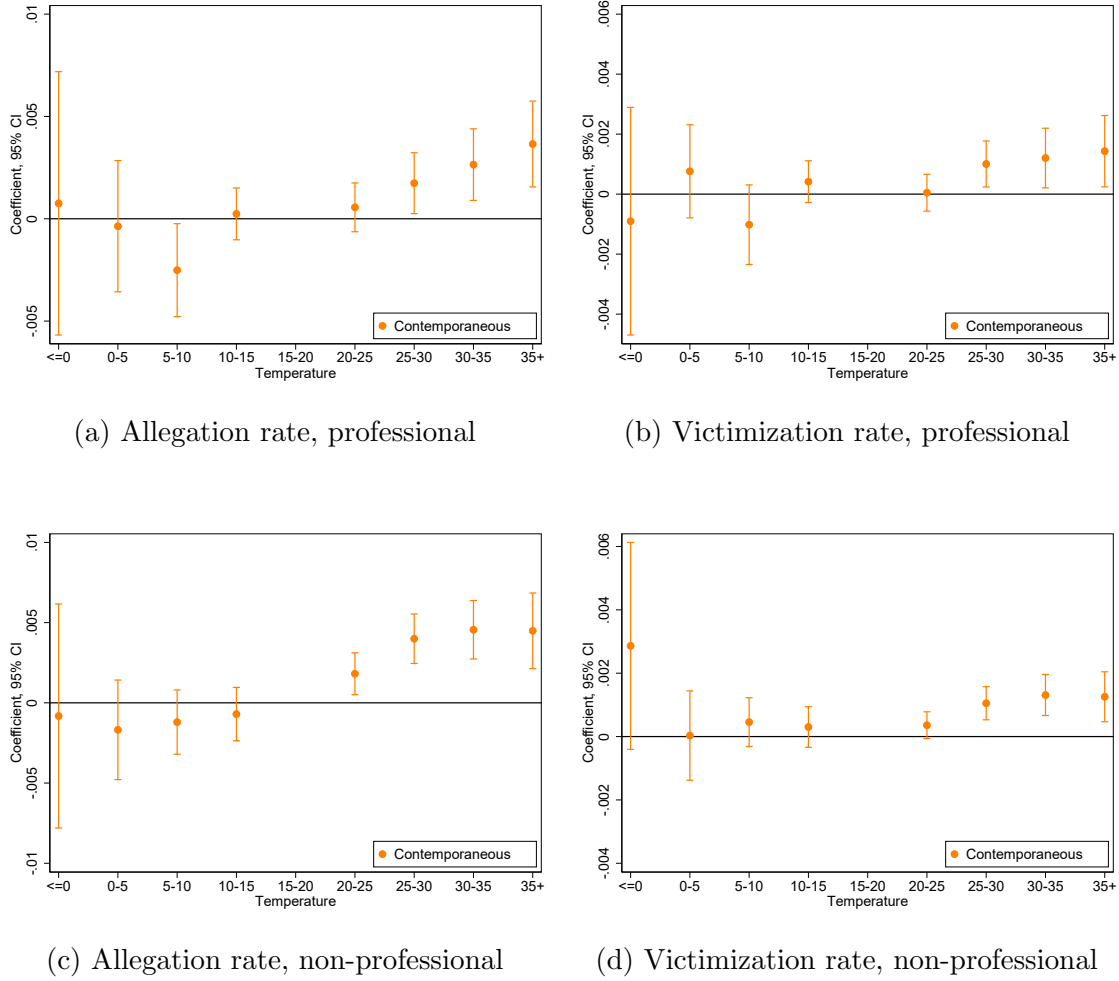
(b) Victimization rate



(c) Substantiation rate

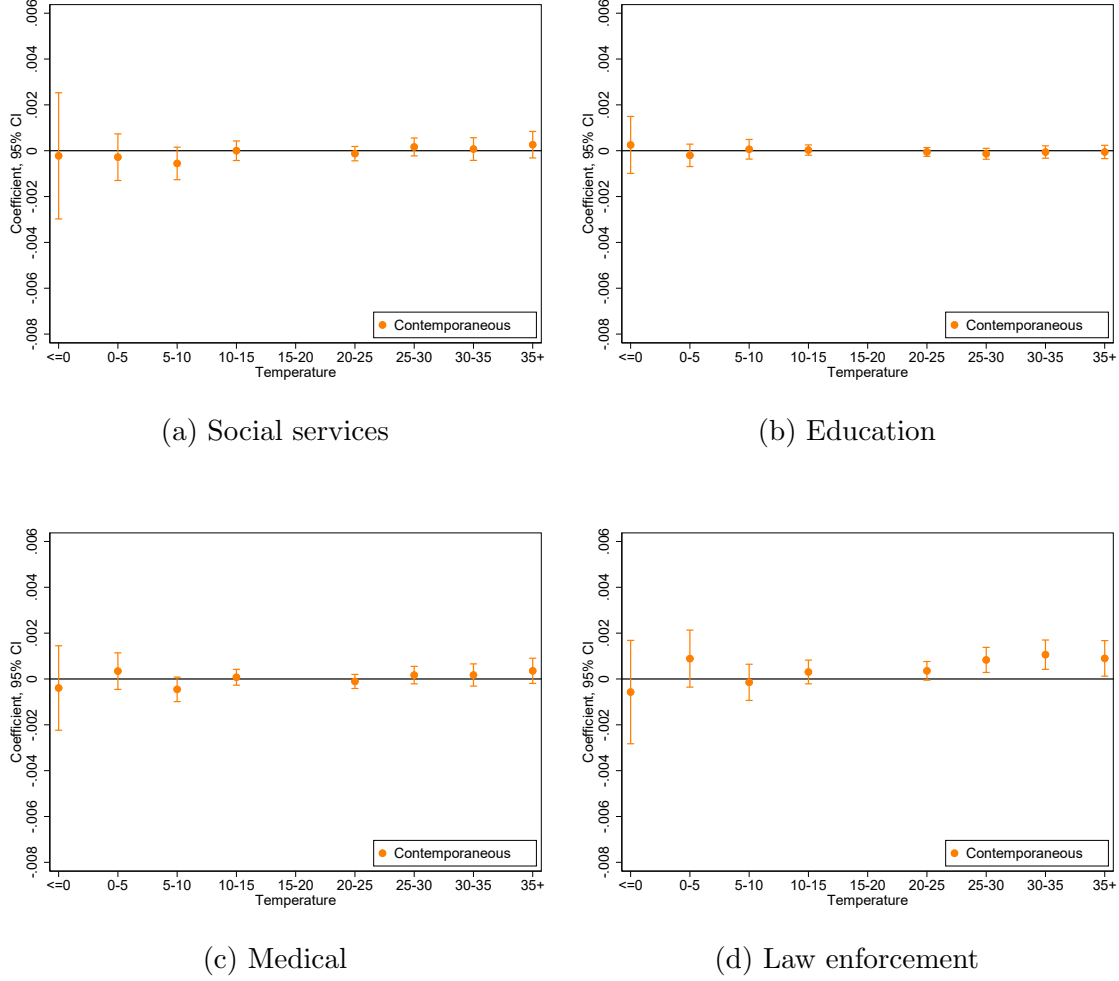
NOTES: This figure plots the estimated coefficients and 95% confidence intervals on the temperature bin variables in the main specification. The estimated coefficients of interest are in orange and denoted with circles. Diamonds denote estimated coefficients on lagged temperature variables while triangles indicate estimated coefficients on lead temperature variables. Panel (a) reports results for the allegation rate, the daily average number of children per 1,000 with at least one maltreatment allegation during the bimonthly reporting period. The sample mean (standard deviation) allegation rate is 0.208 (0.127). Panel (b) plots results for the victimization rate, the daily average number of children per 1,000 with at least one substantiated maltreatment allegation during the bimonthly reporting period. The sample mean (standard deviation) victimization rate is 0.0521 (0.0476). Panel (c) shows results for the substantiation rate, the fraction of children who are found to be victims of child maltreatment among those with allegation(s). The substantiation rate is the victimization rate divided by the allegation rate. The sample mean (standard deviation) substantiation rate is 0.255 (0.156)

Figure 3: Relationship between Temperature and Child Maltreatment for Young Children by Report Source



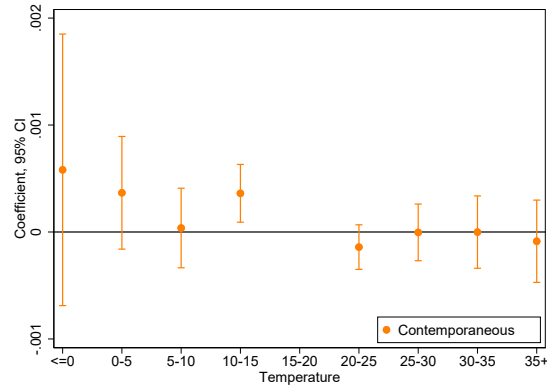
NOTES: This figure plots the estimated coefficients and 95% confidence intervals on the contemporaneous temperature bin variables. Temperature leads and lags are included but not reported. Controls and fixed effects are as described in the main specification. Panels (a) and (c) report results for the allegation rate, the daily average number of children per 1,000 with at least one maltreatment allegation during the bimonthly reporting period. Panels (b) and (d) plot results for the victimization rate, the daily average number of children per 1,000 with at least one substantiated maltreatment allegation during the bimonthly reporting period. Panels (a) and (b) show results based on reports from professional sources while (c) and (d) depict results based on reports for non-professional sources.

Figure 4: Relationship between Temperature and Victimization Rate for Young Children by Professional Report Source

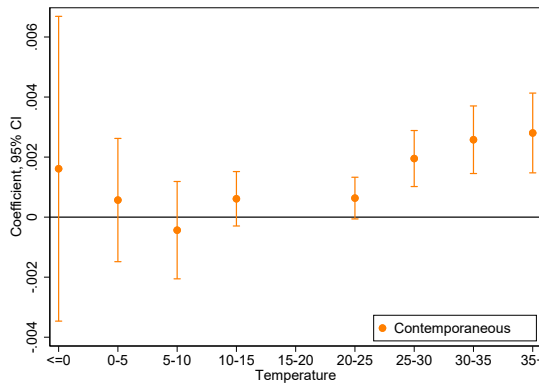


NOTES: This figure plots the estimated coefficients and 95% confidence intervals on the contemporaneous temperature bin variables. Temperature leads and lags are included but not reported. Controls and fixed effects are as described in the main specification. For each panel, the results show the estimated relationship between temperature and the victimization rate where the rate is calculated using reports from each specific report source. Panel (a) uses reports from social service personnel; panel (b) is restricted to reports from education personnel and day care providers; panel (c) uses reports from medical and mental health personnel; panel (d) is restricted to reports from legal, law enforcement, and criminal justice personnel. The victimization rate is the daily average number of children per 1,000 with at least one substantiated maltreatment allegation during the bimonthly reporting period.

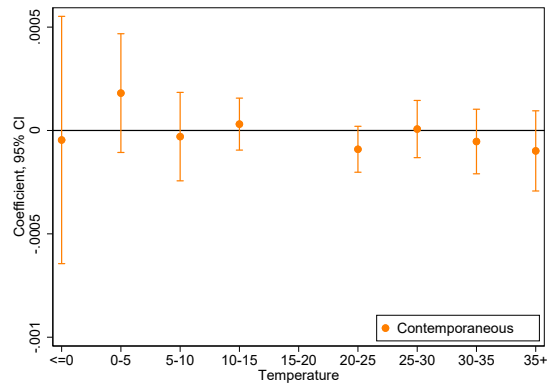
Figure 5: Relationship between Temperature and Victimization Rate for Young Children by Maltreatment Type



(a) Physical abuse



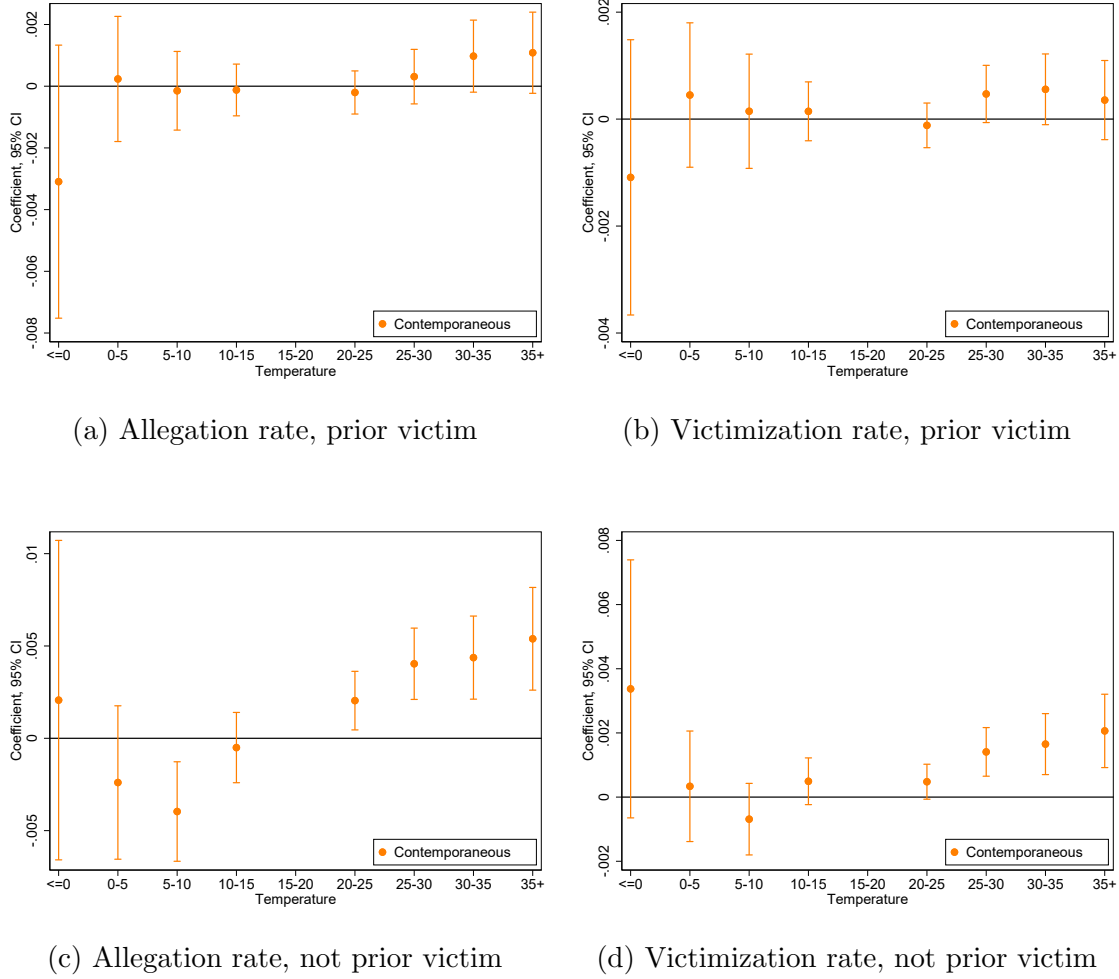
(b) Neglect



(c) Sexual abuse

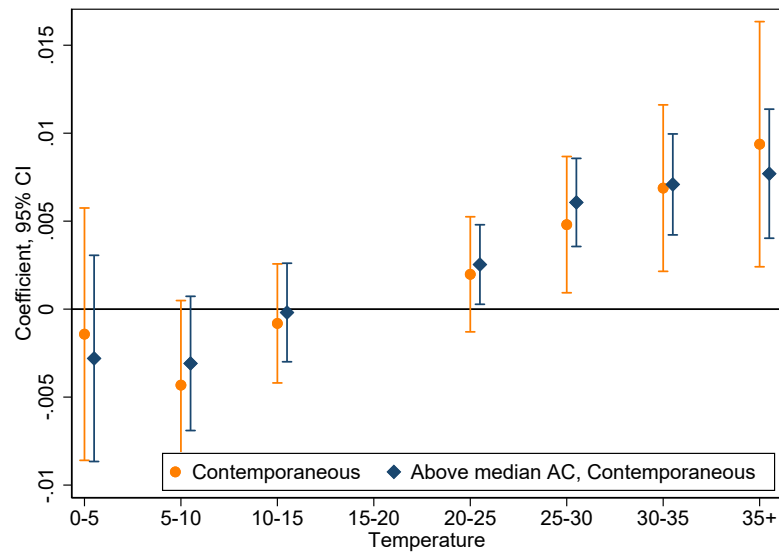
NOTES: This figure plots the estimated coefficients and 95% confidence intervals on the contemporaneous temperature bin variables. Temperature leads and lags are included but not reported. Controls and fixed effects are as described in the main specification. For each panel, the results show the estimated relationship between temperature and the victimization rate where the rate is calculated by type of maltreatment. Panel (a) shows results for physical abuse; panel (b) shows results for neglect; panel (c) reports results for sexual abuse. The victimization rate is the daily average number of children per 1,000 with at least one substantiated maltreatment allegation during the bimonthly reporting period.

Figure 6: Relationship between Temperature and Child Maltreatment for Young Children by Prior Victim Status

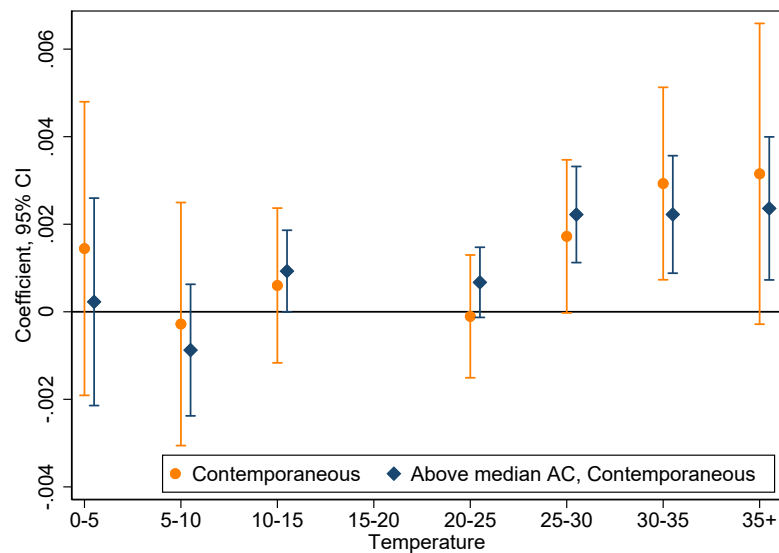


NOTES: This figure plots the estimated coefficients and 95% confidence intervals on the contemporaneous temperature bin variables. Temperature leads and lags are included but not reported. Controls and fixed effects are as described in the main specification. Panels (a) and (c) report results for the allegation rate, the daily average number of children per 1,000 with at least one maltreatment allegation during the bimonthly reporting period. Panels (b) and (d) plot results for the victimization rate, the daily average number of children per 1,000 with at least one substantiated maltreatment allegation during the bimonthly reporting period. Panels (a) and (b) show results for children who are known to be prior victims of maltreatment while while (c) and (d) depict results for children who are not known to be prior maltreatment victims.

Figure 7: Relationship between Temperature and Child Maltreatment for Young Children by Air Conditioning Penetration



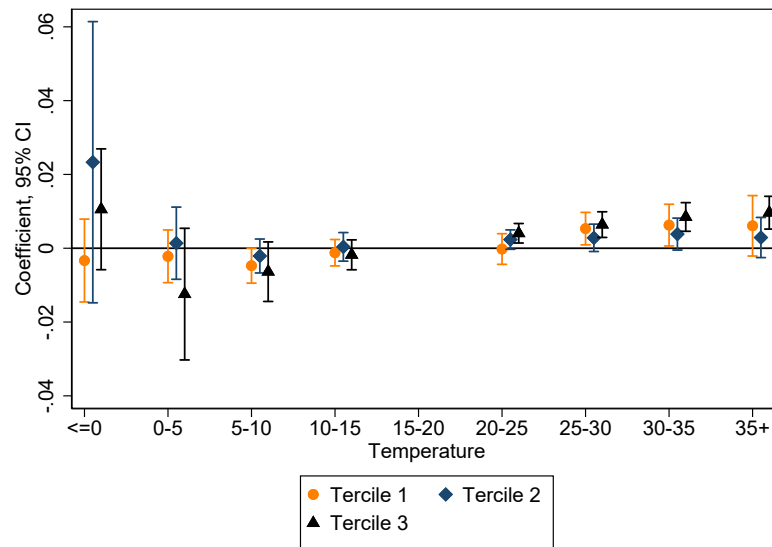
(a) Allegation rate



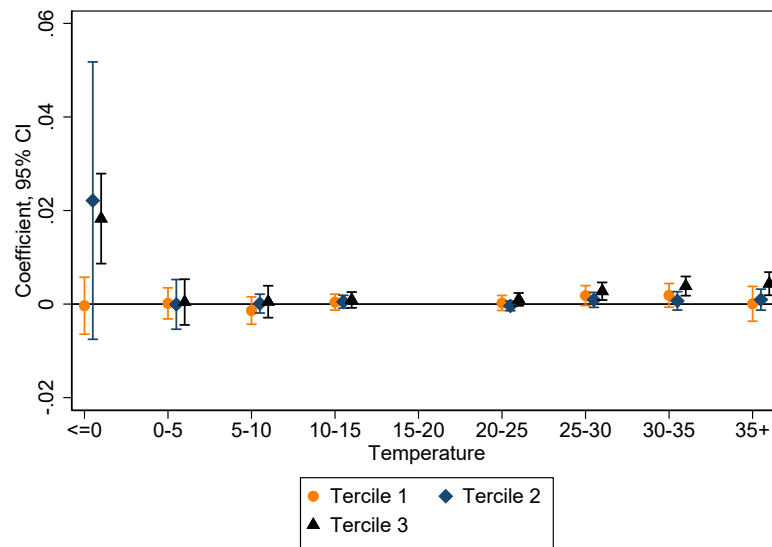
(b) Victimization rate

NOTES: This figure plots the estimated coefficients and 95% confidence intervals on (1) the contemporaneous temperature bin variables, and (2) sums of these estimated coefficients and those on interactions between the contemporaneous temperature bin variables and an indicator for county-level above-median air conditioning penetration in 2005. (1) is depicted as orange circles while (2) is denoted with blue diamonds. Temperature leads and lags are included but not reported. Controls and fixed effects are as described in the main specification. Panel (a) reports results for the allegation rate, the daily average number of children per 1,000 with at least one maltreatment allegation during the bimonthly reporting period. Panel (b) plots results for the victimization rate, the daily average number of children per 1,000 with at least one substantiated maltreatment allegation during the bimonthly reporting period.

Figure 8: Relationship between Temperature and Child Maltreatment for Young Children by Temperature Terciles



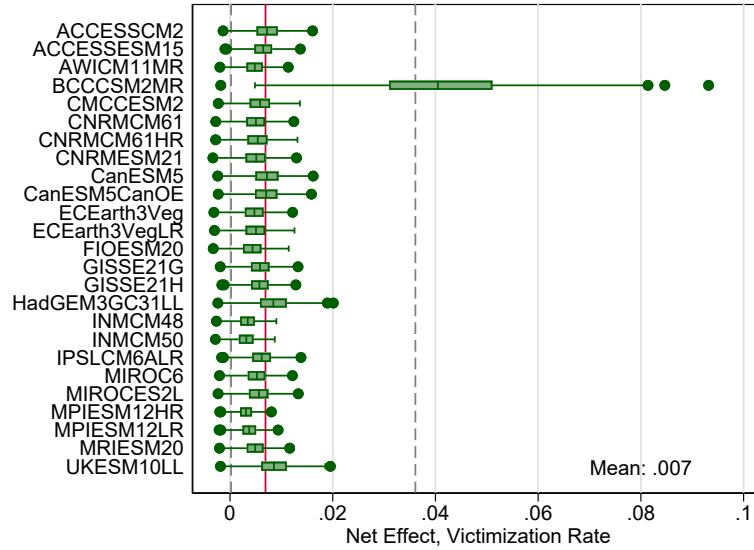
(a) Allegation rate



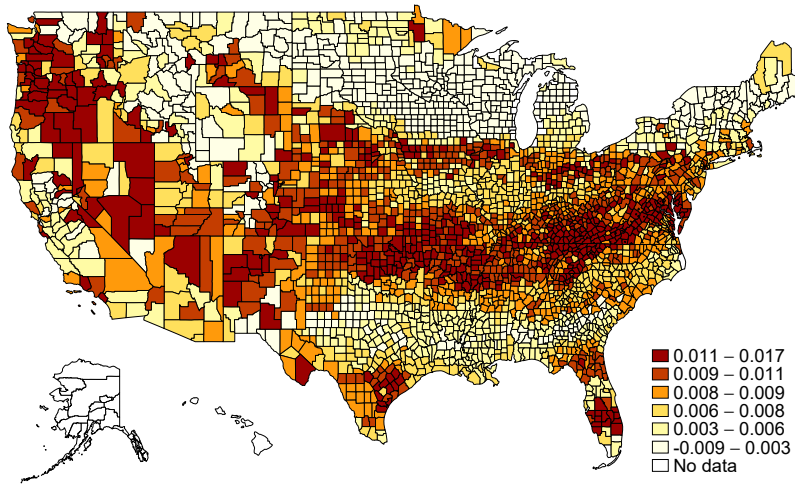
(b) Victimization rate

NOTES: This figure plots the estimated coefficients and 95% confidence intervals on the contemporaneous temperature bin variables based on a sub-sample analysis in which the sample of counties is split by tercile of average annual number of hot days (i.e., daily maximum temperature of 35°C or above) during the sample period.. The estimated coefficients for counties in the lowest tercile are reported as orange circles; those for counties in the second tercile are denoted with blue diamonds; those for the highest tercile are denoted as black triangles. Temperature leads and lags are included but not reported. Controls and fixed effects are as described in the main specification. Panel (a) reports results for the allegation rate, the daily average number of children per 1,000 with at least one maltreatment allegation during the bimonthly reporting period. Panel (b) plots results for the victimization rate, the daily average number of children per 1,000 with at least one substantiated maltreatment allegation during the bimonthly reporting period.

Figure 9: Predicted change in child victimization rate in 2061-2080 due to climate change



(a) Estimated daily effects, averaged across counties



(b) Estimated daily effects, averaged across models

NOTES: This figure plots the estimated change in the daily victimization rate of children aged 0-4 attributable to climate change, that is the change in the daily average number of children per 1,000 with at least one substantiated maltreatment allegation. Panel (a) reports results for 25 climate models across 1,000 bootstrap replications of our main specification. For each model, we report the minimum and maximum estimates obtained, alongside the median, as well as first, and third quartiles. The vertical dashed gray lines report the 2.5th and 97.5th percentiles across all models and bootstrap replications (0.0002 and 0.0361, respectively), while the vertical solid line reports the overall mean, 0.007. Panel (b) plots the average predicted change in victimization rate for each county, averaged across all models and bootstrap replications.

Table 1: Relationship Between Temperature and Maltreatment of Young Children: Alternative Specifications

	(1)	(2)	(3)	(4)	(5)	(6)
Panel A: Allegation rate						
35+ Celsius	0.00803 (0.00168) [0.00184]	0.00679 (0.00158)	0.00730 (0.00147)	0.00701 (0.00145)	0.00817 (0.00170)	0.00607 (0.00108)
Panel B: Victimization rate						
35+ Celsius	0.00269 (0.000779) [0.000824]	0.00247 (0.000725)	0.00264 (0.000658)	0.00253 (0.000657)	0.00265 (0.000797)	0.00164 (0.000411)
County-year & precipitation controls	YES	NO	YES	YES	YES	YES
County-month fixed effects	YES	YES	NO	YES	YES	YES
State-year fixed effects	YES	NO	YES	YES	YES	YES
Reporting period fixed effects	YES	YES	YES	YES	YES	YES
County-year fixed effects	NO	YES	NO	NO	NO	NO
County fixed effects	NO	NO	YES	YES	NO	NO
County X linear year	NO	NO	NO	YES	NO	NO
Temperature lags	YES	YES	YES	YES	NO	YES
Temperature leads	YES	YES	YES	YES	NO	YES
County population weights	NO	NO	NO	NO	NO	YES

NOTES: Table reports the estimated coefficients on the highest temperature bin variable, 35+ degrees Celsius, based on the contemporaneous measure. Column (1) reflects our baseline estimate. Columns (2) through (4) report results with varying sets of fixed effects. Column (5) uses the baseline set of fixed effects but removes temperature leads and lags. Column (6) weighs observations by county population. Standard errors in parentheses are clustered on county. Standard errors in brackets are clustered on state. Balanced panel sample includes 111,936 observations, which represents 424 unique counties for 264 bimonthly periods.

A Appendix

A.1 Construction of panel dataset

In this Appendix we describe the process by which we form a balanced county-by-bimonthly period using the NCANDS Child Files for 2006 to 2018. The NCANDS Child File for a given year includes case-level data on all cases that received a disposition from a child protection services (CPS) agency in the federal fiscal year. A case represents a child-report pair.

We first identify the 426 counties that are unmasked in all 13 Child Files from 2006 to 2018. We then remove cases from the counties that are not continuously unmasked in the Child Files between 2006 and 2018, cases from Puerto Rico (due to data quality concerns), cases for which county of report is masked or missing including child fatalities, and cases with a report year earlier than 2006 or later than 2016. The next step involves identifying cases that appear in multiple Child Files. For these cases, we follow the recommendation in the NCANDS User’s Guide to keep only the instance in the most recent fiscal year. Finally, we remove cases in which the child’s age is above 17.²⁴

The next step in constructing the panel involves appending together all of the relevant Child Files. This results in a data set of 26,307,725 child maltreatment cases reported to CPS agencies between 2006 and 2016, which represents 15,251,185 unique children. As a final step before forming the panel we remove cases for which the maltreatment type was listed as "no alleged maltreatment" (about 12%). This value identifies cases in which a child receives a CPS response but was not the subject of a maltreatment allegation and is used in states that require all children in a household to receive a CPS response if any child in the household is the subject of a CPS response. Within this case-level sample, the median child age is seven; about a third of cases are associated with children age four or younger.

We construct maltreatment outcomes at the child-level (as opposed to the case- or report-level). To do so we collapse the data to create a count of the the number of unique children (e.g., with at least one allegation, with at least one substantiated allegation, etc.) in the county and bimonthly period. We then divide the resulting counts by the number of days in the bimonthly period and scale by annual child population in the county measured in thousands from SEER. The resulting balanced county-by-bimonthly period panel contains 112,464 observations, which represents 426 unique counties and 264 unique bimonthly reporting periods during the 11-year sample period.

About 7% of cases (prior to collapsing) have missing values for report source and less than a half percent of cases have missing values for maltreatment type. We assign the following

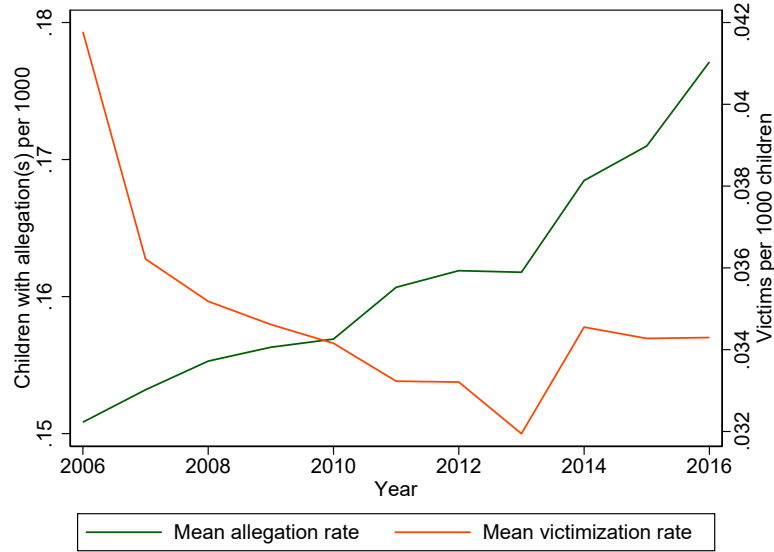
²⁴Prior to this final restriction, less than one percent of cases have missing values for child age

report sources to the "professional reporter" category: social services personnel; medical personnel; mental health personnel; legal, law enforcement, and criminal justice personnel; education personnel; child daycare provider. The following report sources are categorized as "non-professional reporters": substitute care provider, alleged victim, parent, other relative, friends/neighbors, alleged perpetrator, anonymous reporter, other, unknown or missing.

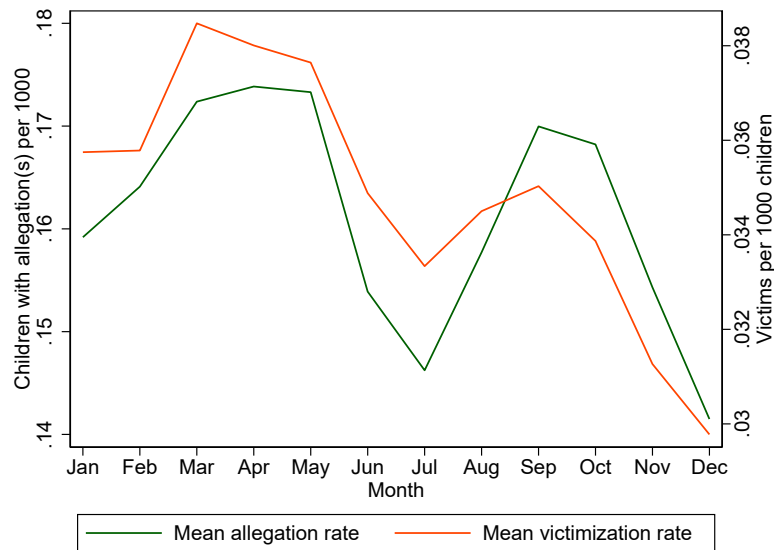
Finally, we drop two counties which do not belong to the contiguous United States as we do not have weather data for them. Thus, we obtain a balanced panel of 424 counties in 42 states.

A.2 Additional figures and tables

Figure A1: Temporal Variation in Child Maltreatment, Age 0-17



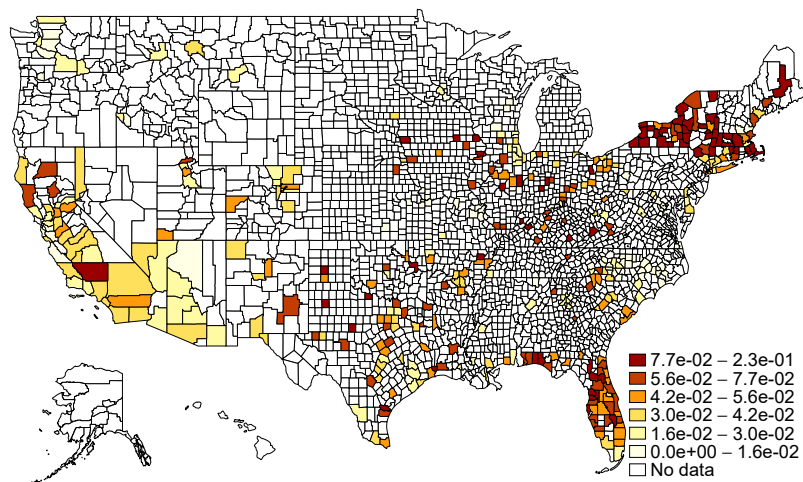
(a) Annual variation



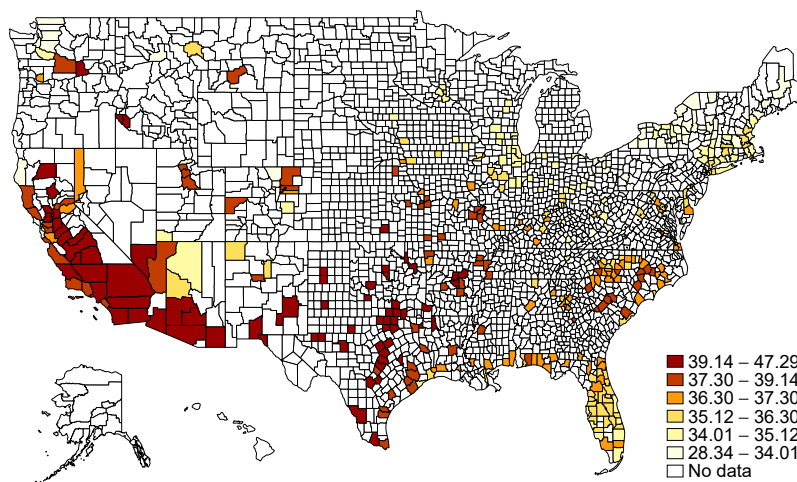
(b) Monthly

NOTES: This figure plots the annual (panel (a)) and monthly (panel (b)) means of the daily average allegation and victimization rates in the bimonthly period for the sample period, 2006 to 2016. The daily average allegation rate measures the average number of children per 1,000 with at least one maltreatment allegation in each day during the bimonthly reporting period. The daily average victimization rate measures the average number of children per 1,000 with at least one substantiated maltreatment allegation in each day during the bimonthly reporting period.

Figure A2: Spatial Variation in Child Maltreatment (Age 0-4) and Temperature



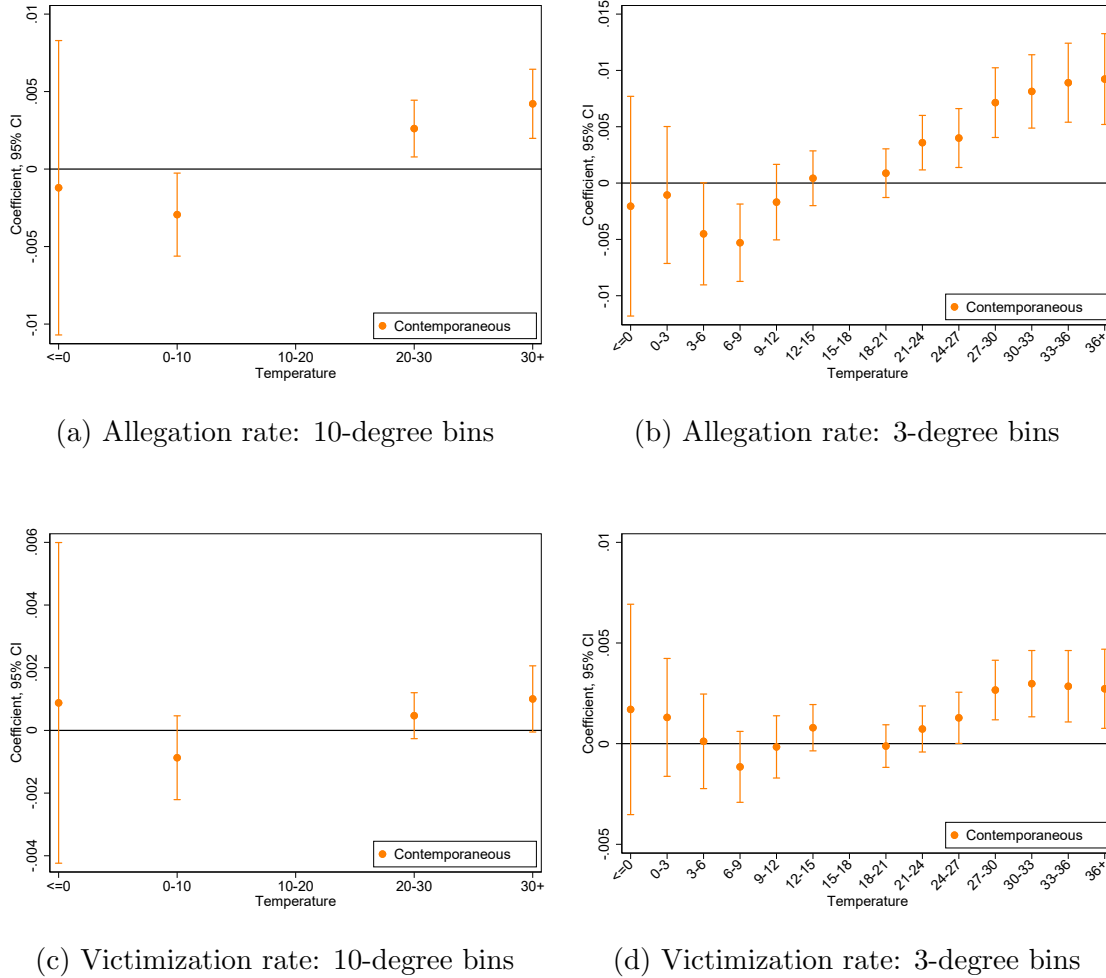
(a) Median victimization rate



(b) Average temperature

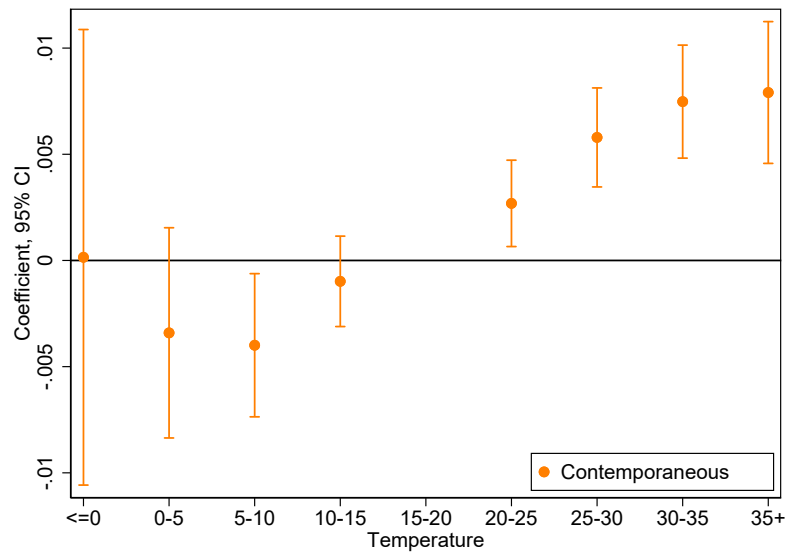
NOTES: This figure depicts spatial variation in victimization rates and temperatures. Panel (a) plots the median of the daily average victimization rates for young children in the bimonthly period for the sample period, 2006 to 2016. The daily average victimization rate measures the average number of children age 0-4 per 1,000 with at least one substantiated maltreatment allegation in each day during the bimonthly reporting period. Panel (b) shows the maximum yearly temperature recorded in each county averaged over the years in our sample: 2006-2016.

Figure A3: Relationship between Temperature and Child Maltreatment for Young Children, Alternative Temperature Bins

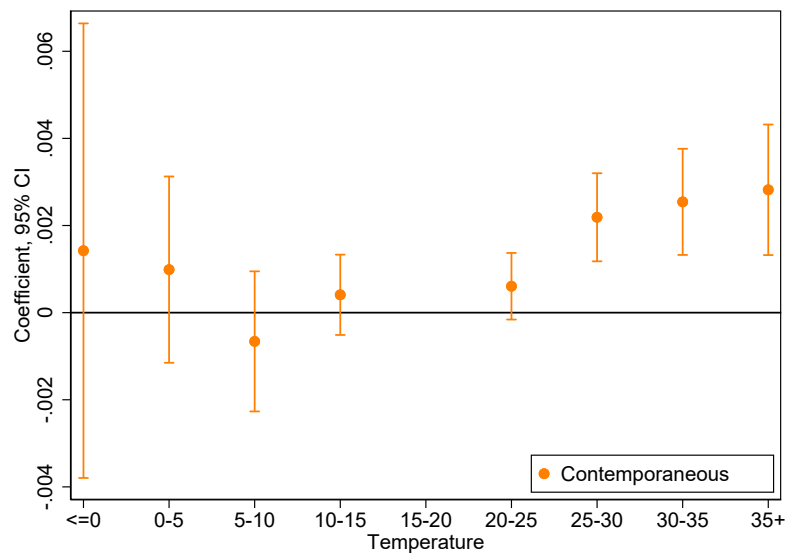


NOTES: This figure plots the estimated coefficients and 95% confidence intervals on the temperature bin variables defined over 10°C (Panels (a) and (c)) and over 3°C (Panels (b) and (d)), respectively. Controls and fixed effects are as described in the main specification. Panels (a) and (b) report results for the allegation rate, the daily average number of children per 1,000 with at least one maltreatment allegation during the bimonthly reporting period. Panels (c) and (d) plot results for the victimization rate, the daily average number of children per 1,000 with at least one substantiated maltreatment allegation during the bimonthly reporting period.

Figure A4: Relationship between Temperature and Child Maltreatment for Young Children, Alternative Assignment of Weather Variables



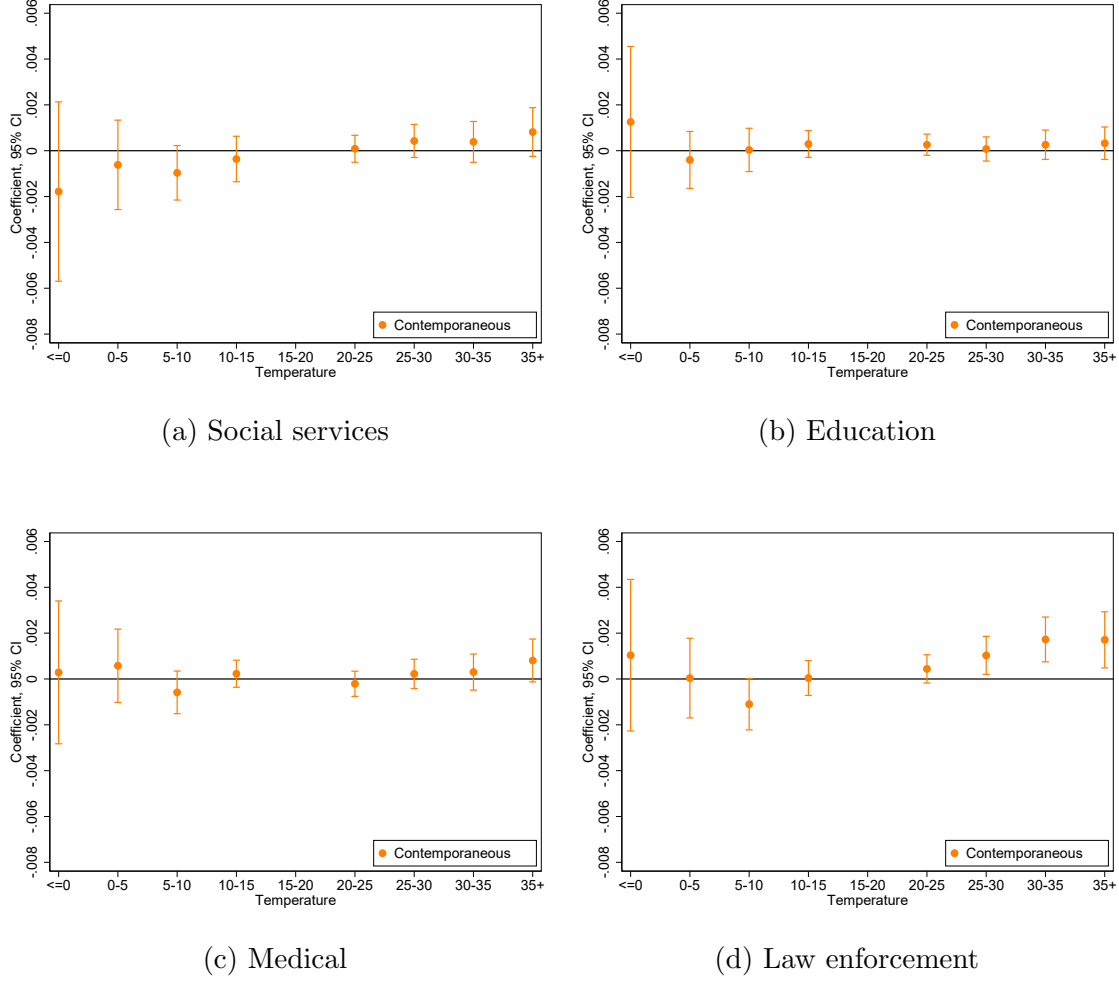
(a) Allegation rate



(b) Victimization rate

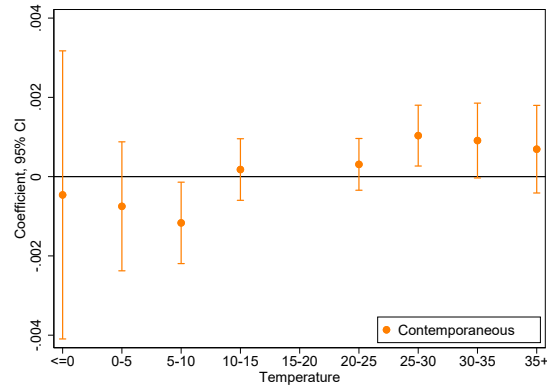
NOTES: This figure plots the estimated coefficients and 95% confidence intervals on the contemporaneous temperature bin variables. Temperature leads and lags are included but not reported. Controls and fixed effects are as described in the main specification. Panel (a) reports results for the allegation rate, the daily average number of children per 1,000 with at least one maltreatment allegation during the bimonthly reporting period. Panel (b) plots results for the victimization rate, the daily average number of children per 1,000 with at least one substantiated maltreatment allegation during the bimonthly reporting period. Temperature and precipitation measures are assigned to each county by averaging across grid cells that intersect the county polygon and weighing observations by the fraction of county surface they cover.

Figure A5: Relationship between Temperature and Allegation Rate for Young Children by Professional Report Source

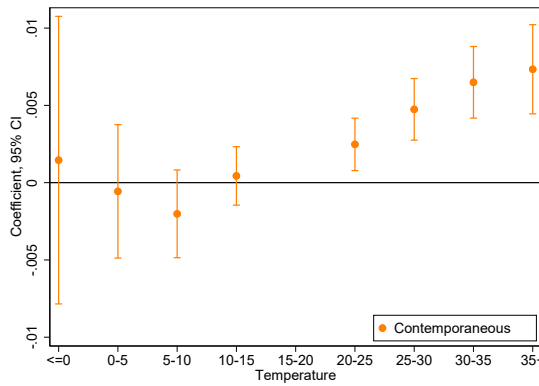


NOTES: This figure plots the estimated coefficients and 95% confidence intervals on the contemporaneous temperature bin variables. Temperature leads and lags are included but not reported. Controls and fixed effects are as described in the main specification. For each panel, the results show the estimated relationship between temperature and the allegation rate where the rate is calculated using reports from each specific report source. Panel (a) uses reports from social service personnel; panel (b) is restricted to reports from education personnel and daycare providers; panel (c) uses reports from medical and mental health personnel; panel (d) is restricted to reports from legal, law enforcement, and criminal justice personnel. The allegation rate is the daily average number of children per 1,000 with at least one maltreatment allegation during the bimonthly reporting period.

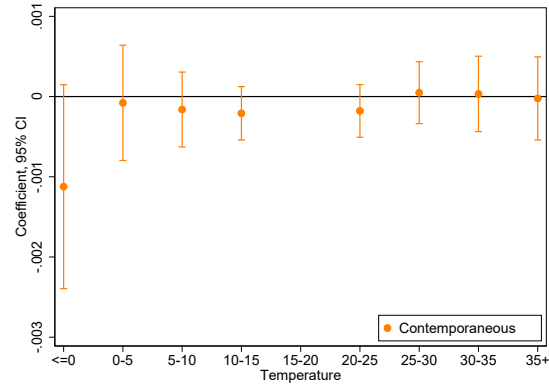
Figure A6: Relationship between Temperature and Allegation Rate for Young Children by Maltreatment Type



(a) Physical abuse



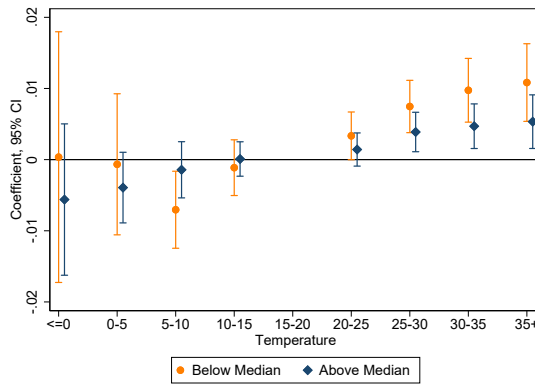
(b) Neglect



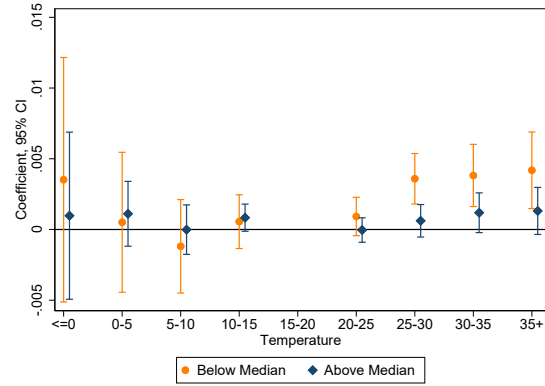
(c) Sexual abuse

NOTES: This figure plots the estimated coefficients and 95% confidence intervals on the contemporaneous temperature bin variables. Temperature leads and lags are included but not reported. Controls and fixed effects are as described in the main specification. For each panel, the results show the estimated relationship between temperature and the allegation rate where the rate is calculated by type of maltreatment. Panel (a) shows results for physical abuse; panel (b) shows results for neglect; panel (c) reports results for sexual abuse. The allegation rate is the daily average number of children per 1,000 with at least one maltreatment allegation during the bimonthly reporting period.

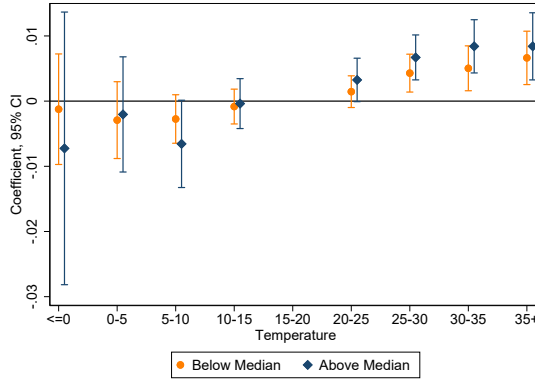
Figure A7: Relationship between Temperature and Child Maltreatment for Young Children: Heterogeneous Effects



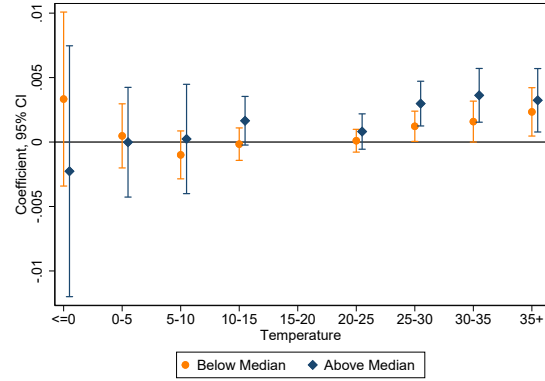
(a) Median HH income, Allegation rate



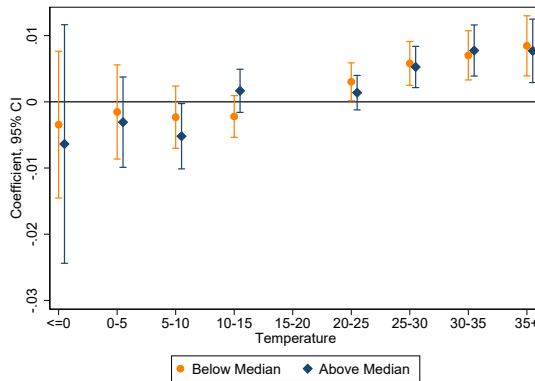
(b) Median HH income, Victimization rate



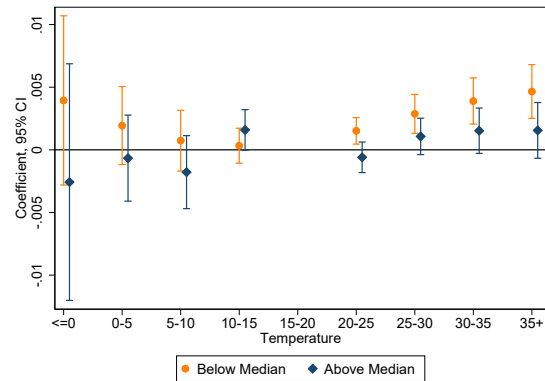
(c) % children in poverty, Allegation rate



(d) % children in poverty, Victimization rate



(e) Unemployment rate, Allegation rate



(f) Unemployment rate, Victimization rate

NOTES: This Figure plots the estimated coefficients and 95% confidence intervals on the contemporaneous temperature bin variables from split sample analyses. Temperature leads and lags are included but not reported. Controls and fixed effects are as described in the main specification. Panels (a), (c), and (e) show the estimated relationship between temperature and the allegation rate. Panels (b), (d), and (f) show the estimated relationship between temperature and the victimization rate. The allegation rate is the daily average number of children per 1,000 with at least one maltreatment allegation during the bimonthly reporting period. The victimization rate is the daily average number of children per 1,000 with at least one substantiated maltreatment allegation during the bimonthly reporting period.

Table A1: Summary Statistics for Outcome Measures

	Mean (Standard deviation)
Panel A: Allegation rate measures	
Allegation rate	0.208 (0.127)
Allegation rate, professional source	0.102 (0.0712)
Allegation rate, non-professional source	0.107 (0.0844)
Allegation rate, educational source	0.0131 (0.0166)
Allegation rate, medical source	0.0263 (0.0241)
Allegation rate, social services source	0.0226 (0.0273)
Allegation rate, law enforcement source	0.0399 (0.0379)
Allegation rate, prior victim	0.0435 (0.0539)
Allegation rate, not prior victim	0.153 (0.105)
Panel B: Victimization rate measures	
Victimization rate	0.0521 (0.0476)
Victimization rate, professional source	0.0363 (0.0345)
Victimization rate, non-professional source	0.0158 (0.0216)
Victimization rate, educational source	0.00249 (0.00644)
Victimization rate, medical source	0.00868 (0.0118)
Victimization rate, social services source	0.00764 (0.0134)
Victimization rate, law enforcement source	0.0175 (0.0210)
Victimization rate, prior victim	0.0138 (0.0216)
Victimization rate, not prior victim	0.0352 (0.0346)

NOTES: Table reports means and standard deviations for outcome measures based on the balanced panel sample of 111,936 observations, which represents 424 unique counties for 264 bimonthly periods. The mean and standard deviation for the substantiation rate are 0.255 and 0.156, respectively. See text at beginning of appendix for information on construction of measures and missing values.

Table A2: Results for Control Variables in Main Specifications

	Allegation rate	Victimization rate	Mean (Standard deviation)
Share of children in poverty	0.0884 (0.0324)	0.00550 (0.0165)	0.210 (0.0738)
Median household income (1,000 USD)	-0.000778 (0.000293)	-0.000596 (0.000158)	51.241 (12.402)
Share Black	0.410 (0.198)	0.104 (0.104)	0.120 (0.120)
Share Hispanic	-0.639 (0.135)	-0.173 (0.0860)	0.141 (0.156)
Share other race	-0.778 (0.239)	-0.0824 (0.110)	0.050 (0.052)
Unemployment rate	0.000510 (0.00124)	0.000157 (0.000579)	6.837 (2.722)
Average daily precipitation over reporting period (in decimeters)			
Contemporaneous	-0.0510 (0.00766)	-0.0158 (0.00341)	0.0291 (0.0297)
Lag 1	0.00528 (0.00703)	0.000992 (0.00359)	0.0291 (0.0298)
Lag 2	0.00360 (0.00697)	-0.000632 (0.00310)	0.0291 (0.0298)
Lead 1	0.00767 (0.00838)	-0.000663 (0.00359)	0.0291 (0.0298)
Lead 2	0.00212 (0.00703)	0.0000832 (0.00353)	0.0291 (0.0297)

NOTES: First two columns of the table report the estimated coefficients and standard errors associated with control variables for the two main outcome variables: allegation rate and victimization rate. Fixed effects are as described in the main specification. The final column reports sample means and standard deviations. Socioeconomic controls are annual county-level measures. Sample size is 111,936, which represents 424 unique counties for 264 bimonthly periods.